

Pushing the Boundaries: Frontiers of Quality of Life Research



Photo credit: Ron Ruhoff, VISIT DENVER



18th Annual Conference



OCTOBER, 26-29, 2011

International Society for Quality of Life Research
18th Annual Conference



BRAVE is exploring new and uncharted territories.



Going where others won't takes courage. As a leading biopharmaceutical company, Shire is constantly driven by forward thinking and innovative ideas. We empower our colleagues to explore new ways of discovering, developing, and delivering therapies for patients with debilitating diseases. With relentless dedication, we are making progress every day - and you can be a part of it.

Change the face of medicine in a unique opportunity in HEOR at Shire:

Health Economics and Outcomes Director (PRO)

Specific emphasis and experience in assessing and developing patient reported outcomes

What will brave mean to you?

To learn about this role and apply online, please visit: www.TimeToBeBrave.com,
Position Reference **3131BR**.

To learn about other opportunities in HEOR, visit www.TimeToBeBrave.com and search 'HEOR' under keyword. Other opportunities include regional, field-based HEOR roles (**2678BR**); Associate HEOR Director (**3133BR**); Associate Director, Modelling (**3132BR**).



To be as brave as the people we help.

Shire is an equal opportunity employer.

Argentina | Australia | Austria | Belgium | Brazil | Canada | Czech Republic | Denmark | Finland | France | Germany | Greece | Ireland | Italy
Colombia | Japan | Mexico | The Netherlands | Norway | Portugal | Russia | Singapore | Spain | Sweden | UK | USA

Welcome to the 18th Annual Conference of the International Society for Quality of Life Research

October 26-29, 2011



Photo credit: Ron Ruhoff, VISIT DENVER

Table of Contents

Schedule at a Glance	2
Welcome	3
ISOQOL Leadership.....	4
Scientific Program Committee.....	5
Conference Information	7
Exhibits/Sponsors.....	9
Plenary Speakers.....	12
Schedule	16
Concurrent Oral Sessions.....	22
Concurrent Symposia Sessions.....	30
Poster Presentations	32
Hotel Floor Plan	47



Contact information

ISOQOL Executive Office
555 E. Wells Street, Suite 1100
Milwaukee, WI 53202
Telephone: +1(414) 918-9797 • Fax: +1(414) 276-3349
E-mail: info@isoqol.org • Web: www.isoqol.org

ISOQOL Mission Statement

To advance the scientific study of health-related quality of life and other patient-centered outcomes to identify effective interventions, enhance the quality of health care and promote the health of populations.

Schedule at a Glance

Wednesday, October 26		
7:00 am - 5:00 pm	Registration Open	South Convention Lobby
9:30 am - 5:00 pm	Full Day Workshop - (WK17) Introduction to PROMIS and Assessment Center	MicroTek Denver
9:30 am - 12:30 pm	Morning Workshops - (WK01 - WK08)	See page 16
2:00 pm - 5:00 pm	Afternoon Workshops - (WK09 - WK16)	See page 16
5:00 pm - 6:30 pm	IAC Symposium - To Qualify or Not to Qualify: Benefits and Challenges of PRO Instrument Qualification from Industry, Academic, and Regulatory Perspectives	Silver
6:30 pm - 7:00 pm	Meet The President/First Time Attendee Reception	South Convention Lobby
7:00 pm - 9:00 pm	Opening Reception	South Convention Lobby
Thursday, October 27		
7:00 am - 5:00 pm	Registration Open	South Convention Lobby
7:00 am - 8:00 pm	Poster Hall Open	Grand Ballroom 1
7:30 am - 8:30 am	Exhibits Open and Continental Breakfast	South Convention Lobby
7:30 am - 8:30 am	Breakfast Roundtables (BRT01 - BRT06)	Windows
8:45 am - 10:30 am	Welcome & Qualitative Research Plenary	Grand Ballroom 2
10:30 am - 11:00 am	Exhibits Open and Break	
10:30 am - 11:00 am	Meet the Authors Poster Session	Grand Ballroom 1
11:00 am - 12:30 pm	Concurrent Oral Sessions (101 - 104)	Tower Court A-D
12:30 pm - 2:00 pm	Exhibits Open and Lunch on your own	
12:30 pm - 2:00 pm	Committee and SIG Meetings	See page 7
2:00 pm - 3:15 pm	eHealth Plenary	Grand Ballroom 2
3:15 pm - 4:00 pm	Exhibits Open and Break	
3:15 pm - 4:00 pm	Poster Tour	Grand Ballroom 1
4:00 pm - 5:30 pm	Concurrent Symposia Sessions (1 - 3)	Tower Court A - C
5:30 pm - 6:30 pm	Committee and SIG Meetings	See page 7
6:30 pm - 7:30 pm	Mentor/Mentee Reception	Windows
Friday, October 28		
7:00 am - 5:00 pm	Registration Open	South Convention Lobby
7:00 am - 8:00 pm	Poster Hall Open	Grand Ballroom 1
7:30 am - 8:30 am	Exhibits Open and Continental Breakfast	South Convention Lobby
7:30 am - 8:30 am	Breakfast Roundtables (BRT07 - BRT12)	Windows
7:00 am - 8:30 am	Committee and SIG Meetings	See page 7
8:30 am - 9:45 am	Health Disparities Plenary	Grand Ballroom 2
9:45 am - 10:30 am	Exhibits Open and Break	
9:45 am - 10:30 am	Meet the Authors Poster Session	Grand Ballroom 1
10:30 am - 12:00 pm	Concurrent Oral Sessions (201 - 204)	Tower Court A-D
12:00 pm - 2:00 pm	ISOQOL Members Meeting and Lunch	Grand Ballroom 2
2:00 pm - 3:30 pm	Concurrent Oral Sessions (205 - 208)	Tower Court A-D
3:30 pm - 4:30 pm	Exhibits Open and Break	
3:30 pm - 4:30 pm	Poster Tour	Grand Ballroom 1
4:00 pm - 5:30 pm	Concurrent Oral Sessions (209 - 212)	Tower Court A-D
Saturday, October 29		
7:00 am - 3:00 pm	Registration Open	South Convention Lobby
7:00 am - 8:00 pm	Poster Hall Open	Grand Ballroom 1
7:30 am - 8:30 am	Exhibits Open and Continental Breakfast	South Convention Lobby
9:00 am - 10:30 am	President's Award & Personalized Health Care Plenary	Grand Ballroom 2
10:30 am - 11:30 am	Exhibits Open and Break	
10:30 am - 11:30 am	Meet the Authors Poster Session and Poster Tour	Grand Ballroom 1
11:30 am - 1:00 pm	Exhibits Open and Lunch on your own	
1:00 pm - 2:30 pm	Concurrent Oral Sessions (301 - 304)	Tower Court A-D
2:30 pm - 4:15 pm	Concurrent Symposia Sessions (4 - 6)	Tower Court A-C
4:30 pm - 5:30 pm	Donna Lamping Memorial	Windows
7:00 pm - 10:00 pm	Closing Dinner	Denver Art Museum

Welcome to Denver!

Welcome to the 18th Annual Conference of ISOQOL, “Pushing the Boundaries: Frontiers of Health Related Quality of Life Research”. HRQOL has become a key indicator of the major health problems confronting individuals and society. Examination of its outcomes contributes to the processes of setting policy goals, and monitoring of the effectiveness of health care. HRQOL encompasses a wide array of domains including health status, interactions with family and friends, and access to resources such as income and a safe environment. Scientific discoveries and technological innovations are rapidly creating new opportunities within health care that will require vigilant monitoring of HRQOL and other patient-reported outcomes (PROs). As new frontiers are explored it will be crucial to understand how these changes impact patients’ HRQOL, and essential to advance the technologies that capture and maintain HRQOL information.

This year’s plenary sessions reflect our theme: qualitative research, eHealth, health disparities, personalized health care. The presentations and posters were extremely competitive and we believe the quality will be outstanding. The poster walking tours are being reintroduced featuring ISOQOL senior researchers who will highlight selected posters. Also new this year are breakfast roundtables offering a wide array of special topics and networking opportunities, with proceeds contributing to the ISOQOL scholarship fund. For new members/first-time attendees there will be a special “Meet the President (and Board Members)” welcome on the first night and we are again hosting a mentor/mentee reception the second night. The closing dinner this year will be held at the Denver Art Museum which is known for its collection of American Indian art, and has a comprehensive collection numbering more than 68,000 works from across the world.

As time permits, we invite you to enjoy the wonderful City of Denver. You can take a hike, taste buffalo meat, touch a dinosaur bone or borrow a bike to ride around historical lower downtown Denver. Denver is a wonderful city with interesting neighborhoods, like LoDo and Larimer Square.

Thank you for joining us for this year’s annual conference. We hope you will meet new collaborators, develop new creative ideas, and understand the importance of ISOQOL as scientific discoveries and technological innovations are rapidly creating new opportunities.



Cynthia Gross, PhD
Professor,
University of Minnesota, Pharmacy & Nursing



Karen H. Sousa, RN PhD
Professor & Associate Dean for Research,
University of Colorado Denver; College of Nursing



This conference is supported by Award Number R13 CA162880 from the National Cancer Institute. The content is solely the responsibility of the authors and does not necessarily represent the official views of the National Cancer Institute or the National Institutes of Health.

ISOQOL Leadership 2010-2011

President



Carol M. Moinpour, PhD
United States

President-Elect



Bryce Reeve, PhD
United States

Past President



Diane Fairclough, DrPH
United States

Secretary-Treasurer



Jeff Sloan, PhD
United States

Board of Directors



Sara Ahmed, PhD
Canada



Michael Brundage, MD
Canada



Henrica C.W. de Vet, PhD
The Netherlands



Fabio Efficace, PhD
Italy



Joanne Greenhalgh, PhD
United Kingdom



Cindy L.K. Lam, MD
Hong Kong, SAR China



Jane Scott, PhD
United Kingdom



Claire Snyder, PhD
United States



Kathleen Wyrwich, PhD
United States

Co-Editors of Quality of Life Research Journal

Dennis Revicki, PhD, United States
Carolyn Schwartz, ScD, United States

ISOQOL Staff



Executive Director
Rebecca Brandt, CAE



Meetings and Membership Manager
Heather Vitale

Scientific Program Committee

eHealth Plenary Subcommittee

Carolyn Gotay, PhD, Canada (Convener)
Susan Parsons, MD, MRP, United States (Convener)
Sara Ahmed, PhD, Canada
Fabio Efficace, PhD, Italy
Thomas Elliott, MD, United States
Lori McLeod, PhD, United States

Health Disparities Plenary Subcommittee

James W. Shaw, PhD, PharmD, MPH, United States (Convener)
Rick Berzon, DrPH, United States
Andrew Bottomley, PhD, Belgium
Carolyn Schwartz, ScD, United States
Kathy Wyrwich, PhD, United States

Personalized Health Care Plenary Subcommittee

A. George Awad, MD, PhD, FRCPC, Canada
Christopher Forrest, MD, PhD, United States
Ming-Ann Hsu, MPH, United States
William Lenderking, PhD, United States
Jeff Sloan, PhD, United States
Mirjam Sprangers, PhD, The Netherlands

Qualitative Research Plenary Subcommittee

Anne Klassen, D Phil, Canada (Convener)
Anita Molzahn, PhD, RN, Canada (Convener)
Cicely Kerr, MSc, PhD, United Kingdom
Kathryn Lasch, PhD, United States
Mona L. Martin, RN, MPA, United States
April Naegeli, DrPh, United States
Annabel Nixon, PhD, United Kingdom
Josephine M. Norquist, MSc, United States
Carolyn Schwartz, ScD, United States
Hwee-Lin Wee, PhD, Singapore

Local Arrangements Subcommittee

Roxanne Jensen, PhD, United States (Convener)
Ana Maria Rodriguez, MSc, BSc PT, Canada (Convener)
Susan Bartlett, PhD, Canada
Diane Fairclough, DrPH, United States
Elizabeth Gibbons, MSc, United Kingdom
Bellinda King-Kallimanis, MS, The Netherlands
Anandi V. Law, PhD, United States
Lauren Lee, PharmD, MS, PhD, United States
Deborah M. Miller, PhD, United States
Elizabeth Shenkman, PhD, United States
Jeannie Zuk, PhD, United States

Abstract Reviewers

Sara Ahmed, PhD, Canada
Susan J. Bartlett, PhD, Canada
Rick Berzon, DrPH, United States
Andrew Bottomley, PhD, Belgium
Serge Briancon, MD, France
Karin S. Coyne, PhD, MPH, United States
Henrica C.W. de Vet, PhD, The Netherlands
Fabio Efficace, PhD, Italy
Thomas Elliott, MD, United States
Christopher Forrest, MD, PhD, United States
Elizabeth Gibbons, MSc, United Kingdom
Carolyn C. Gotay, PhD, Canada
Ming-Ann Hsu, MPH, United States
Marc Jacobs, MSc, The Netherlands
Gloria Juarez, PhD, RN, MSN, United States
Cicely Kerr, MSc, PhD, United Kingdom
Anne Klassen, D Phil, Canada
Kathryn E. Lasch, PhD, United States
William Lenderking, PhD, United States
Lori McLeod, PhD, United States
Deborah Miller, PhD, United States
Sandra A. Mitchell, PhD, CRNP, AOCN, United States
Carol M. Moinpour, PhD, United States
Anita Molzahn, PhD RN, Canada
Vasudha Mukherjee Bal, MSc, MBA, United States
April Naegeli, United States
Annabel Nixon, PhD, United Kingdom
Josephine M. Norquist, MSc, United States
Susan Parsons, MD, MRP, United States
Ana A. Popielnicki, BA, United States
Ana Maria Rodriguez, MSc, BSc PT, Canada
Carolyn E. Schwartz, ScD, United States
Shahnaz Shahrbanian, PhD Student, Canada
James W. Shaw, PhD, PharmD, MPH, United States
Maja Tadic, PhD candidate, Croatia
Hwee-Lin Wee, PhD, Singapore
Carlos King Ho Wong, MPhil, BSc, Hong Kong, SAR China
Kathleen J. Yost, PhD, United States

ISOQOL 18th Annual Conference Closing Dinner

Saturday, October 29 • 7:00 PM • *Denver Art Museum*
Limited amount of tickets available at the Registration Desk



What's the right blend of ePRO to satisfy your study?



Telephone

Handheld

Digital Pen

Web

**Now you can choose which flavor works
best for you, your patients and your sites.**

With ERT ePRO Solutions you can choose between all proven modalities of technology to ensure that the ideal device is matched to every protocol for every patient population across all phases of clinical research. The right modality for the right trial.



info@ert.com
+1 866 538 2808
www.ert.com

Conference Information

Pushing the Boundaries – Frontiers of Quality of Life Research is the theme of the ISOQOL 18th Annual Conference. To help celebrate this theme, we have introduced a new track, “Frontiers of Quality of Life Research” which showcases the emerging QoL research from pioneers in our field.

All oral sessions and posters have been grouped into one of four conference track sessions:

- Clinical Practice (CP)
- Frontiers of Quality of Life Research (FR)
- Methods and Theory (MT)
- Populations and Policy (PP)

Registration

Registration fees include access to all concurrent sessions, symposia, and plenary sessions, in addition to the posters and exhibits. The Opening Reception on Wednesday evening, continental breakfast on Thursday, Friday, and Saturday, and breaks are also included in registration fees. Workshop registration, Breakfast Roundtable registration, and tickets for the Closing Dinner on Saturday night are not included in registration fees, but may be purchased on site at the Registration Desk pending availability.

The Registration Desk is open on Wednesday, October 26 through Friday, October 28, from 7:00 am – 5:00 pm and on Saturday, October 29, from 7:00 am – 3:00 pm.

Cancellation Policy

All registration cancellations must be received in writing and all refunds will be paid after the Conference. A \$50 fee will be assessed for cancellations received by August 18. Fifty percent of the total amount paid will be refunded if cancellation is received by September 14. Twenty five percent will be refunded if cancellation is received by October 5. Cancellations received after October 5 will not be eligible for a refund. ISOQOL reserves the right to cancel any event due to lack of enrollment or other factors.

Employment Services Program

Once again, ISOQOL will offer the Employment Services program. This program allows institutions to post job opportunities, and qualified applicants looking for employment to post their resume during the conference. Look for the Employment Services Program table near the Registration Desk and add job announcements and resumes to the appropriate notebooks.

ISOQOL Committees

ISOQOL members are encouraged to serve on Committees and Subcommittees.

Join us at the following Committee meetings:

Thursday, October 27

1:00 pm – 2:00 pm

Fundraising Committee, Gold

5:30 pm – 6:30 pm

Industry Advisory Committee (IAC), Gold

Additional opportunities for service on ISOQOL Committees can be found on the Committee page of the ISOQOL website.

Communications: Newsletter and Website

Education: Mentoring, Scholarships, Student/New Investigator, and Workshops

Membership

Scientific Program

ISOQOL Special Interest Groups

Special Interest Groups (SIGs) have been established to facilitate communications between researchers with specific interests, ranging from methodology to applications of QoL in particular populations. SIGs offer all ISOQOL members a unique network of researchers who share similar interests within the quality of life field.

Join us at the SIG meetings.

Thursday, October 27

12:30 pm – 2:00 pm

Clinical Practice SIG, Tower Court D

Translation and Cultural Adaptation (TCA) SIG, Tower Court C

5:30 pm – 6:30 pm

Child Health SIG, Tower Court B

New Investigators SIG, Tower Court D

Response Shift SIG, Tower Court C

Friday, October 28

7:00 am – 8:30 am

Psychometrics SIG, Tower Court D

Can't meet with us in person? Visit the SIG page on the ISOQOL website to connect with SIG leaders and join the discussion on the listservs.

Conference Information

Message Board

Looking to connect with friends and colleagues? Want to find a group to go hiking in the Rocky Mountains or tour Coors Field after the conference? Post a request on the ISOQOL Message Board located near the Registration Desk. The Message Board offers all attendees the opportunity to connect with their peers at the Annual Conference. Don't forget the ISOQOL Facebook page is a great way to stay connected, too!

Poster Sessions

This year, ISOQOL is pleased to offer three days of unique Poster Sessions. Each poster has been assigned a specific presentation day, Thursday, Friday, or Saturday, so the Poster Hall will showcase new research each day! All Poster Sessions will take place in Grand Ballroom 1. Poster presenters are responsible for set up and removal of their posters.

There will be two types of poster presentations each day. **Meet the Authors Sessions**, where authors will be on hand to present their research and answer questions about their posters, and **Poster Tours**, where ISOQOL leaders will take a group of interested participants through selected posters to discuss the study and the research findings. Additional information, and sign up sheets will be available at the Registration Desk.

Print Your Boarding Pass

Printing your boarding pass is easy at the Sheraton Downtown Denver. There is a kiosk located in the lobby of the hotel that offers complimentary printing.



Scientific Awards

The following Annual Awards will be presented at the 18th Annual Conference.

The **2011 President's Award** is awarded to an individual who has advanced HRQOL research and has made outstanding contributions to the Society in one or more of the following areas: education of professionals, patients or lay individuals about HRQOL's value; promotion or execution of HRQOL or other scholarly activities; and facilitating or furthering policy initiatives that have an impact on HRQOL. The awardee is selected by the Executive Committee and endorsed by the Board of Directors. This year's President Award recipient will be recognized on Saturday morning during the President's Award & Personalized Health Care Plenary.

The **New Investigator/Student Awards** recognize the best overall oral and poster presentations made by full time students and investigators in the early stages of their career in HRQOL research. The finalists will be recognized and winners announced at the Closing Dinner.

The **Outstanding Article of the Year Award** recognizes the single best article dedicated to HRQOL research published in *Quality of Life Research* journal during the previous calendar year. This award recognizes the author(s) for significant intellectual contributions that promise to advance the state of the art in HRQOL research methods or theory. The finalists will be recognized, and the winner announced at the Closing Dinner.

Outstanding Poster Awards recognize the year's top posters. The posters with the highest evaluations during the review process will be recognized with a ribbon posted on their poster board.



*Join us in remembering
ISOQOL Past President,*

Donna Lamping, PhD

Saturday, October 29 • 4:30 – 5:30 PM

Windows

Exhibitors

ISOQOL would like to thank the following companies for their participation as exhibitors at this year's meeting.



ERT, a global provider of clinical services and customizable devices to biopharmaceutical and healthcare organizations, enables customers to streamline the clinical trials process and automate data collection, analysis and distribution in all phases of clinical development. ERT is the market leader for centralized cardiac safety, respiratory efficacy and multi-mode ePRO services, vital to customers' drug development safety and testing efforts.

www.ert.com



Under the scientific direction of renowned QOL expert David Cella, PhD, FACITtrans' multilingual translation team has been a long-time leader in the translation of HRQL and PRO instruments using a rigorous, well-published methodology. Our linguistic valuation efforts better ensure our translations are culturally and semantically appropriate, and they promote adherence to industry guidelines. Our team also serves as the principal resource for translating the item banks in each of the following National Institutes of Health projects: PROMIS (U01 AR 052177), NeuroQOL (HHSN 2652004236), and Toolbox (AG-260-06-01). FACITtrans is affiliated with FACIT.org Inc., the licensor for the FACIT (Functional Assessment of Chronic Illness Therapy) Measurement System. To us, translations are not just a business, they are a critical part of a contiguous outcomes research program.

www.facit.org



For more than a decade, Lionbridge has provided language services to Life Sciences companies. Our unique vertical knowledge finds its roots in the tens of thousands of projects we have successfully completed over the years. This extensive experience enables us to drive proven processes and rigorous SOPs to ensure the highest quality translations for our clients.

www.Lionbridge.com



MAPI Institute and MAPI Research Trust offer Linguistic Valuation and a wide range of research services in the Patient Reported Outcomes field.

www.mapi-institute.com www.groupmapi.com



Thomson Reuters helps you clearly differentiate your product within the market using patient-reported outcomes (PROs) to support a compelling dossier submission. Our deep clinical and therapeutic knowledge, ability to develop and integrate PRO instruments into the process, and experience negotiating with key approval agencies make us an integral partner in your product's success.

www.healthcare.thomsonreuters.com/Pharma

A Special Thank You to the 2011 Institutional Members

AstraZeneca

Northwestern University

Pfizer Canada

Sponsors

ISOQOL would like to thank the following organizations for their contributions as 18th Annual Conference Sponsors.



Sponsor of Health Disparities Plenary, Health Disparities: Measuring and Improving Outcomes and Patient Quality of Life



Sponsor of Personalized Health Care Plenary, Genetics and QOL: How the Interface Can Impact Research and Practice



Sponsor of Qualitative Research Plenary, Enhancing Quality of Life Research with Qualitative Data



Sponsor of eHealth Plenary, Innovative Approaches to Improve Health and Quality of Life Through e-Interventions

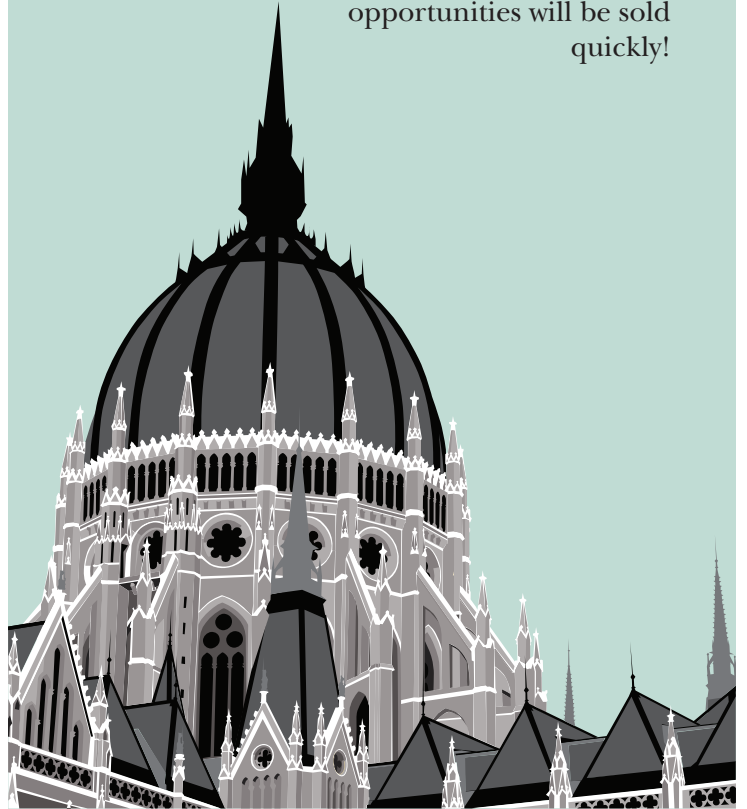
Scholarship Support Provided by:



Attendees of the Breakfast Roundtables

Sponsorship & Advertising Opportunities for 2012

Would your company like to speak directly to researchers, statisticians, nurses and physicians in the HRQOL field? Sponsoring a portion of the 2012 Annual Conference will provide you with such a unique opportunity. Please visit www.isoqol.org or e-mail Jean Wenzel, jwenzel@isoqol.org for more information. Act soon, top opportunities will be sold quickly!



BUDAPEST
International Society for Quality of Life Research
19th ANNUAL CONFERENCE
October 24-27, 2012

integrated intelligence

See UBC Experts Speak at the Following Sessions

Innovative Methods for Electronically Capturing Patient-Reported Outcomes and Preference Data in Non-Interventional Studies

Sonya Fremencko, MA, ePRO Manager

Ingela Wiklund, PhD, Senior Research Leader

Workshop: Wednesday, October 26, 2:00 pm - 5:00 pm

Development and Analysis of PROMIS Pain Intensity Scale

Wen-Hung Chen, PhD, Research Scientist

Dennis Revicki, PhD, Senior Vice President

Oral Presentation: Friday, October 28, 10:30 am - 12:00 pm

Evaluation of Dimensionality and Model Fitting for IRT Analysis

Dennis Revicki, PhD, Senior Vice President

Wen-Hung Chen, PhD, Research Scientist

Symposium: Saturday, October 29, 2:45 pm - 4:15 pm

Safety. Effectiveness. Value.

UBC is a global scientific and medical affairs organization that partners with life science companies to develop and commercialize their products. We bring together scientific experts, research professionals and new technologies to generate authoritative, real-world evidence of product effectiveness, safety and value.



United BioSource Corporation

Evidence Matters®

US +1 866 458 1096
EU +44 (0) 20 8834 0100
unitedbiosource.com

Plenary Speakers

Thursday, October 27, 2011; 8:45 am – 10:30 am

Sponsored by 

Enhancing Quality of Life Research with Qualitative Data

Organized by the Qualitative Research Subcommittee



Pamela S. Hinds, PhD, RN, FAAN
Director, Dept. of Nursing Research and Quality Outcomes,
Associate Director, Clinical and Community Research Center,
Children's National Medical Center

Professor of Pediatrics,
The George Washington University

Pamela is the Director of the Department of Nursing Research and Quality Outcomes at Children's National Medical Center in Washington, D.C., a Professor of Pediatrics at the George Washington University in Washington, D. C. and an adjunct professor at the University of Tennessee, College of Nursing, Knoxville, TN, University of Pennsylvania School of Nursing, Philadelphia, PA , the Johns Hopkins University, School of Nursing and the University of Maryland, School of Nursing in Baltimore, MD.

As the immediate past Director of Nursing Research at St. Jude Children's Research Hospital for 23 years, Dr. Hinds had the privilege of creating and leading research related to hope and the pediatric cancer experience, quality of life, fatigue and altered sleep during the treatment of pediatric cancers, and end of life communication and decision making. She served on the IOM committee on end-of-life and palliative care for children in America and the NQF panel on palliative and end-of-life care in America. She is an Oncology Nursing Society Distinguished Nurse Researcher and the Association of Pediatric Oncology and Hematology Distinguished Nurse Researcher. She currently serves on the NCI Symptom and Quality of Life Scientific Committee, Co-director of the Patient-Reported Outcomes (PRO) Resource Center for the Children's Oncology Group, and member of the NINR Ad Hoc Evaluation Advisory Committee, End-of-life and Palliative Care Science: a Needs Assessment of Federal and Private Research Funding Trends, Project Grants, and National Research Priorities and as the editor-in-chief for the journal, *CANCER NURSING: An International Cancer Journal*.



Kathryn E. Lasch, PhD
Director, Patient Reported Outcomes,
Mapi Values

Kathy provides expertise on qualitative methodology within the context of the selection, development and validation of Patient-Reported Outcome (PRO) questionnaires. Her research interests include the influence of social, economic, and cultural factors on health and medical care delivery, with a special focus on pain and other quality of life issues, and she is currently the Senior Lead on the Patient Reported Outcomes of Fatigue in Cancer (PROOF-C). Kathy has extensive experience and state-of-the-art knowledge in the conduct, analysis, and write-up of qualitative research and has conducted survey, evaluation, and clinical research using both quantitative and qualitative methods. Her areas of expertise, in addition to social science methodology, include pain, oncology, and HIV/AIDS.

Prior to joining Mapi Values, Kathy has served Tufts University as Assistant Professor of Medicine and Co-Founder and Co-Director of the Master of Science in Pain Research, Education, and Policy Program. She has also served as Research Scientist at The Health Institute within the Tufts-New England Medical Centre. In addition, she was the Research Subject Advocate for the Tufts University School of Medicine and New England Medical Center's General Clinical Research Center. Kathy formerly served as the Principal Investigator of two cancer education programs funded by the National Cancer Institute.



Sally Thorne, PhD, FCAHS, RN
Professor, University of British Columbia School of Nursing

Sally is a Professor at the University of British Columbia School of Nursing where she has had a longstanding program of research and teaching and administrative leadership. She is a widely published author with numerous peer reviewed papers, chapters and books on such topics as the delivery of chronic illness and cancer care, philosophy of science, and qualitative research methodology, including books on qualitative metasynthesis and applied qualitative methods. Dr. Thorne is a Fellow of the Canadian Academy of Health Sciences, a member of the Board of Directors for the Canadian Partnership Against Cancer, and serves as Editor-in-Chief for the critical scholarship journal *Nursing Inquiry*.

Plenary Speakers

Thursday, October 27, 2011; 2:00 pm – 3:15 pm

Sponsored by  UBC
University of British Columbia

Innovative Approaches to Improve Health and Quality of Life Through e-Interventions

Organized by the eHealth Subcommittee

The internet is transforming the face of health care. The three talks in this session will provide concrete examples of e-interventions that are being used to enhance health and quality of life in cancer survivors and the global community.

Alice Krueger

President, Virtual Ability, Inc.

Alice is president of Virtual Ability, Inc., and head of the Virtual Ability support community inside Second Life® (SL). As her multiple sclerosis progressed, she found it difficult to participate in her real life community, so she turned to SL to fulfill these basic human needs. A frequent presenter in SL, Ms. Krueger has also presented at the Health 2.0 Conference and at the Haus der Kulturen der Welt in Berlin, demonstrating the benefits of virtual worlds for people with disabilities. She also has academic publications in the area of disability studies in virtual worlds.



Fiona McTavish, MS

Deputy Director, Center for Health Systems Studies,
University of Wisconsin, Madison

Fiona is the Deputy Director for CHESS (the Center for Health Systems Studies) at the University of Wisconsin, Madison. Since the early 90's she has directed numerous clinical trials on improving the quality of life for people with life threatening and chronic diseases. This includes clinical trials for breast, lung, colon and prostate cancer patients and their families, teens dealing with moderate to severe asthma and their parent/guardian and most recently people leaving addiction treatment centers. She has paid particular emphasis to how the underserved access and use technology when faced with health concerns.



Marcia A. Testa, MPH, M.Phil., PhD

Harvard University, School of Public Health

Marcia is a Senior Lecturer in the Department of Biostatistics and Director, Preparedness and Emergency Response Learning Center, Division of Policy Translation and Leadership Development, Harvard School of Public Health, Boston. She received her M.P.H. '76, M.Phil. '77, and Ph.D. '80 in Epidemiology and Public Health from Yale University. She is Co-Director of the MPH Program in Quantitative Methods at Harvard, an elected public health officer, and founder and Chairman of Phase V Technologies, Inc., a company specializing in health outcomes research since 1987. Dr. Testa's methodological research involves developing quantitative methodologies, analyses and information technology applications for the measurement and analysis of patient-centered outcomes and remote clinical monitoring with an emphasis in cardiovascular disease, HIV, cancer and diabetes.

Friday, October 28, 2011; 8:30 am – 9:45 am

Sponsored by  EORTC European Organization for Research and Treatment of Cancer  QoL Quality of Life

Health Disparities: Measuring and Improving Outcomes and Patient Quality of Life

Organized by the Health Disparities Subcommittee



Paula Braveman, MD, MPH

Professor, Family and Community Medicine,
Director, Center on Social Disparities in Health,
University of California, San Francisco

Paula is Professor of Family and Community Medicine and Director of the Center on Social Disparities in Health at the University of California, San Francisco (UCSF). For more than 25 years, Dr. Braveman has published extensively on social disparities in health and health care and actively engaged in bringing attention to this field in the U.S. and internationally. Her research focuses on measuring, documenting, understanding, and addressing socioeconomic and racial/ethnic disparities, particularly in maternal and infant health and health care. She was elected to the Institute of Medicine of the National Academy of Sciences in 2002.



2011 ISOQOL President's Award Recipient

Carolyn C. Gotay, PhD
Vancouver, Canada

Plenary Speakers

Friday, October 28, 2011; 8:30 am – 9:45 am, *continued*



Laura Camfield, PhD
Young Lives, University of Oxford

Laura is a lecturer in International Development at the University of East Anglia and Research Associate of the Young Lives international child poverty study at the University of Oxford. Her research interests include exploring, measuring and understanding quality of life in developing countries; studying experiences of poverty and resilience using qualitative and mixed methods approaches; and children and young people. She is a Vice President of the International Society for Quality of Life Studies and currently leading a 4-year ESRC grant on 'Developing and refining methods for comparative cross-national research on poverty and vulnerability'.



Bruce Rapkin, PhD
Albert Einstein College of Medicine,
Albert Einstein Cancer Center

Bruce is Professor in the Division of Community Collaboration and Implementation Science in the Department of Epidemiology and Population Health at the Albert Einstein College of Medicine and Director of Cancer Prevention and Control Research at the Albert Einstein Cancer Center. His research focuses on access to care and quality of life for diverse, medically-underserved patients, families and communities, and his primary emphasis is on the development of community-academic partnerships to reduce barriers and improve standard of care. He has led several projects to develop strategies to promote evidence-based practice through collaborative research such as the Family Access to Care Study which examined the feasibility of partnerships between frontline providers and health researchers to disseminate mental health interventions for families; and the Queens Library HealthLink Project, designed to promote community organization, outreach and cancer education to diverse underserved communities, in conjunction with the Queens Borough Public Library System. Bruce is principal investigator of two projects involving quality of life appraisal and response shift: HIV Choices in Care Study, sponsored by the New York State Department of Health AIDS Institute, and a study of quality of life in patients with invasive bladder cancer, prostate cancer and gynecological cancers, to examine how differences in appraisal affect quality of life and adaptation. His collaborative research with community organizations, public health systems and health providers has led to the development of new research designs and assessment methodology to promote evidenced-based interventions in public health.

Saturday, October 29, 2011; 9:00 am – 10:30 am

Sponsored by **Genentech**
A Member of the Roche Group

Genetics and QOL: How the Interface Can Impact Research and Practice

Organized by the Personalized Health Care Subcommittee

There is emerging evidence for a genetic basis of patient-reported quality-of-life (QOL) outcomes that can be incorporated into clinical research and practice.

Dr. Bartels, a behavioral geneticist, will present studies of twins that have indicated that heritability estimates for QOL-related domains such as mood and self-reported health, are comparable or even higher than that of most diseases. She will also provide key information on the genetic variance of subjective well being measures and on genes involved in happiness.

Dr. Goldberg, a medical oncologist, will present results of oncology clinical trials that included exploratory studies for identifying relationships between genetic variables and QOL at baseline. He will also describe the clinical implications of this work and how this has the potential to expand and improve the quality of health care delivery.

This session will present state of the science work in the evolving investigation for relationships between biological markers and patient-reported outcomes.



Meike Bartels, PhD
Associate Professor, Biological Psychology,
Free University Amsterdam

Meike is an Associate Professor at the department of Biological Psychology of the VU University in Amsterdam and the Netherlands Twin Register. Her research focuses on the causes of individual differences in Subjective Wellbeing (including Quality of life) and the overlap with Psychopathology. With the use of large twin-family datasets she has been able to investigate the heritability of different measures of SWB. Genotypic data enable her to search for the genomic regions of interest for SWB.

Call for Website Redesign Task Force Co-Chair

ISOQOL is looking for an individual to Co-Chair the redesign of the website. The ideal Co-Chair will have previous exposure to website redesign, although expertise is not required. This position will require teleconference participation, online collaboration and one in-person meeting at the ISOQOL office between 2011 and 2012. If you are interested in playing a key role in an essential tool for your society, please consider this volunteer opportunity. Please contact the ISOQOL Executive Director, Rebecca Brandt, rbrandt@isoqol.org with questions.

This is a non paid volunteer opportunity.

Plenary Speakers

Saturday, October 29, 2011; 9:00 am – 10:30 am, *continued*



Richard Goldberg, MD

Richard M. Goldberg Distinguished Professor of Gastrointestinal Oncology, Chief of Hematology/Oncology, and Associate Director for Clinical Research, University of North Carolina, Lineberger Comprehensive Cancer Care Center

Richard is a member of American Association for Cancer Research (AACR), the American Society of Clinical Oncology (ASCO), and the American Joint Commission on Cancer (AJCC) board of directors. He has been an invited reviewer for many leading medical and oncology journals, and on the editorial boards of the NCI's *Physician Data Query* program, the *Journal of Clinical Oncology*, *Clinical Colorectal Cancer*, and *Oncology*. He is the past president of the International Society of Gastrointestinal Oncology. Dr Goldberg's principal research interests include the evaluation of new agents for the treatment of colorectal cancer, inherited colorectal cancer syndromes, clinical trials methodology, and the role of meta-analysis in the decision making process for evidence based medicine. He has coauthored more than 200 publications including a number of practice changing Phase III studies and collaborations with laboratory based coworkers that have helped to advance the understanding of the biology of colorectal cancer.

After completing his medical training at Emory University and Oncology fellowship at Georgetown University he became an Associate in Medical Oncology at the Geisinger Medical Center and Clinic in Danville, Pennsylvania, and was appointed Vice Chairman of the Departments of Medicine there in 1992. From 1994–2003, he was Professor of Oncology at the Mayo Clinic in Rochester, Minnesota, and chaired the Mayo Gastrointestinal Cancer Research Program. In 2004 he was appointed the chair of the Gastrointestinal Cancer Committee for the Cancer and Acute Leukemia B Group (CALGB). He was recently appointed the Associate Chairman of CALGB.

Our discoveries transform lives across the world.
What will your impact be?

Patient Reported Outcome (PRO) Research Scientists

Our focus on innovation means the next big discovery is never far away at AstraZeneca. And each of our breakthroughs means a huge amount to our stakeholders – whether that's patients, medical professionals or the extraordinary people on our teams who make it all possible.

Here's your chance to join us. You'll be helping to take our R&D to the next level as we increase our focus on the evidence needed by patients, prescribers, payers and regulatory authorities. It's a role that will see you driving the delivery of patient-reported information, as well as guiding drug development projects in areas such as early clinical development, personalized medicine and patient safety.

To succeed here, you'll need a detailed understanding of the global regulatory guidance and measurement processes utilized in patient-reported assessments. You'll also need the ability to translate patient symptoms and concerns into a conceptual framework that can be rapidly and easily evaluated. Experience of interacting with patients, providers, regulatory bodies and external thought leaders is also essential.

We have a very exciting future ahead. To find out how you could be part of it, please visit www.astrazenecacareers.com

astrazenecacareers.com

Congratulations to the 2011 New Investigator/Student Award Finalists

New Investigator Oral Presentation Finalists

Roxanne Jensen, PhD, *Georgetown University, Washington, DC, United States*

Evan Matros, MD, *Memorial Sloan Kettering Cancer Center, New York, NY, United States*

Anne M. Skalicky, MPH, *University of Washington, Seattle, WA, United States*

Paulos Teckle, PhD, *Canadian Centre for Applied Research in Cancer, Vancouver, BC, Canada*

New Investigator Poster Presentation Finalists

David T. Eton, PhD, *Mayo Clinic, Rochester, MN, United States*

Bekir Fatih Meral, MD, *Sakarya University, Sakarya/Hendek, Turkey*

Shang Yuan Teng, MSc, *McGill University, Montreal, QC, Canada*

Hwee-Lin Wee, PhD, *National University of Singapore, Singapore*

Student Oral Presentation Finalists

Pranav Gandhi, PhD, *South College, Knoxville, TN, United States*

Yash J. Jalundhwala, *University of Illinois at Chicago, Chicago, IL, United States*

Arej Shahbaz, *University of Ottawa, Milton, ON, Canada*

Carlos King Ho Wong, MPhil, BSc, *The University of Hong Kong, Hong Kong Island, Hong Kong SAR*

Student Poster Presentation Finalists

Karl S. Bagraith, *The University of Queensland, Brisbane, Australia*

Maria Yui Kwan Chow, MIPH, MPhil, *National Centre for Immunisation Research and Surveillance (NCIRS), The Children's Hospital at Westmead, Westmead, Sydney, Australia*

Yemi Oluboyede, MSc, *University of Leeds, Leeds, United Kingdom*

Shahnaz Shahrbanian, *McGill University, Montreal, QC, Canada*

Program Schedule

Wednesday, October 26

Registration Desk

7:00 am – 5:00 pm

South Convention Lobby

Workshops

Morning Workshops

9:30 am – 12:30 pm

(WK01), Everything You Wanted to Know about Modern Psychometric Methods but were too Afraid to Ask, Part 1

Tower Court A

Instructors: Jeremy C. Hobart, FRCP PhD and Stefan Cano, BSc PhD, Peninsula College of Medicine and Dentistry, Plymouth, United Kingdom

(WK02), Documenting PRO Evidence for Regulatory Submissions to Support Labeling Claims

Tower Court B

Instructors: Linda M. Nelsen, MHS, Merck & Co., Inc., North Wales, PA, United States; Annabel Nixon, PhD, Oxford Outcomes, Oxford, United Kingdom; and Kati Copley-Merriman, MS, MBA, RTI Health Solutions, Ann Arbor, MI, United States

(WK03), Improving the Design, Conduct and Reporting of Quality of Life in Randomized Clinical Trials

Tower Court C

Instructors: Melanie Calvert, PhD, The University of Birmingham, Birmingham, United Kingdom; Jane Blazeby, MD, University of Bristol & University Hospitals Bristol NHS Foundation Trust, Bristol, United Kingdom, and Michael Brundage, MD, Queen's University, Kingston, ON, Canada

(WK04), Methods to Achieve, Assess and Document Saturation in Qualitative Research

Tower Court D

Instructors: Bonnie Teschendorf, PhD, EVA Associates, Devon, PA, United States; Kathryn E. Lasch, PhD, Mapi Values, Boston, MA, United States; Cicely Kerr, MSc PhD, Oxford Outcomes, Oxford, United Kingdom; and Carla DeMuro Mercon, MS, RTI Health Solutions, Research Triangle Park, NC, United States

(WK05), Systematic Reviews of Measurement Instruments

Gold

Instructors: Caroline B. Terwee, PhD and Henrica de Vet, PhD, VU University Medical Center, Amsterdam, The Netherlands; and Donald Patrick, PhD MSPH, University of Washington, Seattle, WA, United States

(WK06), Interpretation of PRO Data within Clinical Trials

Silver

Instructors: Josephine M. Norquist, MSc, Merck Sharpe & Dohme, Inc., North Wales, PA, United States; Kathleen Wyrwich, PhD, and William Lenderking, PhD, United BioSource Corporation, Bethesda, MD, United States; and Sarah Acaster, MSc, Oxford Outcomes, Oxford, United Kingdom

(WK07), Statistical Approaches for Response Shift Detection

Spruce

Instructors: Lisa Lix, PhD, University of Saskatchewan, Saskatoon, SK, Canada; Nancy Mayo, PhD, McGill University and McGill University Hospital Centre Research Institute, Montreal, QC, Canada; and Richard Sawatzky, PhD, Trinity Western University, Langley, BC, Canada

(WK08), Advanced Psychometric Methods for PRO Development: Factor Analysis

Denver

Instructors: Cheryl D. Coon, PhD, Lauren Nelson, PhD, and Theresa Gilligan, MS, RTI Health Solutions, Research Triangle Park, NC, United States

Afternoon Workshops

2:00 pm – 5:00 pm

(WK09), Innovative Methods for Electronically Capturing Patient-Reported Outcomes and Preference Data in Non-Interventional Studies

Tower Court D

Instructors: Sonya Eremenco, MA, United BioSource Corporation, Bethesda, MD, United States; Ingela Wiklund, PhD, United BioSource Corporation, London, United Kingdom; and Cindy Howry, Bracket, Austin, TX, United States

(WK10), An Introduction to Quality of Life of Assessment

Tower Court C

Instructors: Heather Gelhorn, PhD and Kathleen Wyrwich, PhD, United BioSource Corporation, Bethesda, MD, United States

(WK11), Career Development: Strategies for Landing a Great Job in Quality-of-Life Research

Tower Court B

Instructors: Bellinda King-Kallimanis, MS, University of Amsterdam, Amsterdam, The Netherlands; Roxanne Jensen, PhD, Georgetown University, Washington, DC, United States; Carolyn Gotay, PhD, University of British Columbia, Vancouver, Canada; and Antonia Bennett, PhD, Memorial Sloan-Kettering Cancer Center, New York, NY, United States

(WK12), Everything You Wanted to Know about Modern Psychometric Methods but were too Afraid to Ask, Part 2

Tower Court A

Instructors: Jeremy C. Hobart, FRCP PhD and Stefan Cano, BSc PhD, Peninsula College of Medicine and Dentistry, Plymouth, United Kingdom

(WK13), Managing Cultural Variability in PRO Measurement in a Global Clinical Research Setting

Gold

Instructors: Antoine Regnault, PhD and Benoit Arnould, PhD, Mapi Values, Lyon, France; Caroline Anfray, Mapi Institute, Lyon, France

Program Schedule

Wednesday, October 26, *continued*

(WK14), Step by Step Development of a Patient Reported Outcomes (PRO) Instrument with Good Content Validity

Silver

Instructors: Cicely Kerr, PhD; and Emuella Flood, BA, Oxford Outcomes, Oxford, United Kingdom; Tricia Cimms, ICON, San Francisco, CA, United States

(WK15), Patient-emergent Content Validity: Putting Theory into Practice

Spruce

Instructors: Kathryn E. Lasch, PhD, Mapi Values, Boston, MA, United States; Donald Patrick, PhD MSPH, University of Washington, Seattle, WA, United States; and San Keller, PhD, American Institutes for Research, Chapel Hill, NC, United States

(WK16), Using PRO Data to Generate QALYS for Economic Evaluation

Denver

Instructors: Donna Rowen, PhD; John E. Brazier, PhD and Tracey Young, PhD MSc BSc CStat, University of Sheffield, Sheffield, United Kingdom

Full Day Workshop 9:30 am – 5:00 pm

(WK17), Introduction to PROMIS and Assessment Center

MicroTek Denver, Denver Place South Tower, 999 18th St, Suite 300S

Instructors: Nan Rothrock, PhD, and Richard Gershon, PhD, Northwestern University, Chicago, IL, United States

IAC Symposium 5:00 pm – 6:30 pm

To Qualify or Not to Qualify: Benefits and Challenges of PRO Instrument Qualification from Industry, Academic, and Regulatory Perspectives

Organized by the ISOQOL Industry Advisory Committee (IAC)

Silver

This symposium will review the newly released draft FDA Guidance for Industry Qualification Process for Drug Development Tools (DDT) for biomarkers and patient-reported outcome measures. The goal of the symposium is to debate the pros and cons of the proposed DDT process. The session will bring together representation from the industry, regulatory agencies, and the community of ISOQOL scientists.

Session moderator:

Josephine Norquist, MSc, Patient Reported Outcomes Specialist

Merck Sharp & Dohme, Corp.

ISOQOL IAC Chair

Presenters and Panelists:

David Cella, PhD, Chair and Professor,

Dept. of Medical Social Sciences, Northwestern University

Stephen Coons, PhD, Executive Director,

PRO Consortium, Critical Path Institute

Ari Gnanasakthy, MSc MBA, Head, Patient Reported

Outcomes, Novartis Pharmaceuticals

Elisabeth Piault-Louis, PharmD, MA

ORISE Fellow

Meet the President/ 6:30 pm – 7:00 pm

First Time Attendee Reception

South Convention Lobby

Are you new to ISOQOL? If this is your first annual conference, or if you are a new ISOQOL member, come meet the Board of Directors and Program Planning Committee Co-Chairs and mingle with other new attendees. This is a great opportunity to meet ISOQOL leaders and to ask questions about ISOQOL and the annual conference.

Opening Reception 7:00 pm – 9:00 pm

South Convention Lobby

Join us Wednesday evening, as the Scientific Program Committee Co-Chairs welcome you to Denver. Start off the conference by visiting with old friends and networking with new friends and colleagues.

Thursday, October 27

Registration Desk 7:00 am – 5:00 pm

South Convention Lobby

Poster Hall 7:00 am – 8:00 pm

Grand Ballroom 1

Exhibits Open and 7:30 am – 8:30 am

Continental Breakfast

South Convention Lobby

Breakfast Roundtables 7:30 am – 8:30 am

New for 2011, ISOQOL is presenting breakfast roundtables to offer attendees the opportunity to engage with pioneers of quality of life research from a range of topics and specialties in HRQOL while enjoying breakfast. Pre-registration is required.

A portion of the registration fees supports the ISOQOL New Investigator, Student, and Developing Countries Scholarships.

(BRT01) Pioneers of Outcomes Research and History of ISOQOL

Windows

Convener: **Donald Patrick**, PhD MSPH, Seattle Quality of Life Group, University of Washington, Seattle, WA, United States

(BRT02) Priorities for Funding and Tips for Grantseekers – NCI

Windows

Convener: **Steven B. Clauser**, PhD, Chief, Outcomes Research, National Cancer Institute, Applied Research Program, Rockville, MD, United States

(BRT03) Issues in QoL and Health Economics

Windows

Convener: **David Feeny**, PhD, Kaiser Permanente Northwest Region, The Center for Health Research, Portland, OR, United States

(BRT04) M-Plus

Windows

Convener: **Richard Sawatzky**, PhD RN, Trinity Western University, Langley, BC, Canada

Program Schedule

Thursday, October 27, *continued*

(BRT05) Modern Psychometrics, What's Next?

Windows

Convener: **Stefan Cano**, BSc PhD, Peninsula College of Medicine & Dentistry, Plymouth, United Kingdom

(BRT06) QoL of Children

Windows

Convener: **Pamela S. Hinds**, PhD, RN, FAAN, Clinical and Community Research Center, Children's National Medical Center and Professor of Pediatrics, The George Washington University, Washington, DC, United States

Welcome and Qualitative Research Plenary 8:45 am – 10:30 am

Enhancing Quality of Life Research with Qualitative Data

Organized by the Qualitative Research Subcommittee

Grand Ballroom 2

Chair: **Karen H. Sousa**, RN PhD, University of Colorado Denver, College of Nursing, Aurora, CO, United States

Speakers: **Pamela S. Hinds**, PhD, RN, FAAN, Clinical and Community Research Center, Children's National Medical Center and Professor of Pediatrics, The George Washington University, Washington, DC, United States; **Kathryn E. Lasch**, PhD, Director, Patient Reported Outcomes, Mapi Values, Boston, MA, United States; and **Sally Thorne**, PhD, FCAHS, RN, Professor, University of British Columbia School of Nursing, Vancouver, BC, Canada

Exhibits Open and Break 10:30 am – 11:00 am

South Convention Lobby

Meet the Authors 10:30 am – 11:00 am

Poster Session

Grand Ballroom 1

Concurrent Oral Sessions 11:00 am – 12:30 pm

(101) Cancer and Quality of Life (FR)

Tower Court A

(102) Multiple Sclerosis and Pain (CP)

Tower Court B

(103) Preferences and Utilities (MT)

Tower Court C

(104) Health Policy and Resource Allocation (PP)

Tower Court D

Exhibits Open and Lunch on Your Own 12:30 pm – 2:00 pm

Committee and SIG Meetings

Clinical Practice SIG 12:30 pm – 2:00 pm

Tower Court D

Translation and Cultural Adaptation (TCA) SIG 12:30 pm – 2:00 pm

Tower Court C

Fundraising Committee 1:00 pm – 2:00 pm

Gold

eHealth Plenary 2:00 pm – 3:15 pm

Innovative Approaches to Improve Health and Quality of Life Through e-Interventions

Organized by the eHealth Subcommittee

Grand Ballroom 2

Chair: **Carolyn C. Gotay**, PhD, University of British Columbia, School of Population and Public Health, Vancouver, Canada

Speakers: **Alice Kruger**, President, Virtual Ability, Inc, Colorado, United States; **Fiona McTavish**, M.S, Deputy Director, Center for Health Systems Studies, University of Wisconsin, Madison, Madison, WI, United States; and **Marcia A. Testa**, MPH, M.Phil., PhD, Harvard University, School of Public Health, Cambridge, MA, United States

Exhibits Open and Break 3:15 pm – 4:00 pm

South Convention Lobby

Poster Tour 3:15 pm – 4:00 pm

Grand Ballroom 1

Concurrent Symposia Sessions 4:00 pm – 5:30 pm

(1) Standardization of Health-Related Quality of Life Domains Captured in Oncology Research

Tower Court A

(2) The NIH Toolbox for the Assessment of Neurological and Behavioral Function

Tower Court B

(3) New Developments in Response Shift Research: Theoretical, Philosophical, Methodological, and Clinical Paths

Tower Court C

Committee and SIG Meetings

Child Health SIG 5:30 pm – 6:30 pm

Tower Court B

Response Shift SIG 5:30 pm – 6:30 pm

Tower Court C

New Investigators SIG 5:30 pm – 6:30 pm

Tower Court D

Industry Advisory Committee (IAC) 5:30 pm – 6:30 pm

Gold

Program Schedule

Thursday, October 27, *continued*

Mentor/Mentee Reception 6:30 pm – 7:30 pm

Windows

The ISOQOL Mentor/Mentee program matches new investigators, students and other interested emerging researchers with an ISOQOL Mentor. Pre-registration is required.

Friday, October 28

Registration Desk 7:00 am – 5:00 pm

South Convention Lobby

Poster Hall 7:00 am – 8:00 pm

Grand Ballroom 1

Committee and SIG Meetings

Psychometrics SIG 7:00 am – 8:30 am

Tower Court D

Exhibits Open and Continental Breakfast 7:30 am – 8:30 am

South Convention Lobby

Breakfast Roundtables 7:30 am – 8:30 am

New for 2011, ISOQOL is presenting breakfast roundtables to offer attendees the opportunity to engage with pioneers of quality of life research from a range of topics and specialties in HRQOL while enjoying breakfast. Pre-registration is required.

A portion of the registration fees supports the ISOQOL New Investigator, Student, and Developing Countries Scholarships.

(BRT07) How to Do a Peer Review

Windows

Conveners: **Quality of Life Research Journal Co-Editors, Carolyn Schwartz, ScD**, DeltaQuest Foundation, Inc., Concord, MA, United States; and **Dennis Revicki, PhD**, United BioSource Corporation, Center for Health Outcomes Research, Bethesda, MD, United States

(BRT08) Population and Health Disparities

Windows

Convener: **Rick Berzon, DrPH**, National Institute on Minority Health, NIH, Bethesda, MD, United States

(BRT09) RUMM2030

Windows

Convener: **Stefan Cano, BSc PhD**, Peninsula College of Medicine & Dentistry, Plymouth, United Kingdom

(BRT10) Clinician's Perspectives on PROs and ePROs

Windows

Convener: **Juan J. Dapueto, MD, PhD**, Dept. of Medical Psychology, Facultad de Medicina, Universidad de la República, Montevideo, Uruguay

(BRT11) Biomarkers, Genes and QoL

Windows

Convener: **Meike Bartels, PhD**, Dept. of Biological Psychology, Free University Amsterdam, Amsterdam, The Netherlands

(BRT12) QoL in Neurological Disorders

Windows

Convener: **Nancy Mayo, PhD**, McGill University, Montreal, QC, Canada

Health Disparities Plenary 8:30 am – 9:45 am

Health Disparities: Measuring and Improving Outcomes and Patient Quality of Life

Organized by the Health Disparities Subcommittee

Grand Ballroom 2

Chair: **James W. Shaw, PhD, PharmD, MPH**, Senior Manager, Rheumatology Pharmaceutical Products Global Health Economics and Outcomes Research, Abbott Laboratories, Abbott Park, IL, United States

Speakers: **Paula Braveman, MD MPH**, Professor, Family and Community Medicine, Director, Center on Social Disparities in Health, University of California, San Francisco, San Francisco, CA, United States; **Laura Camfield, PhD**, Young Lives, University of Oxford, Oxford, United Kingdom; and **Bruce Rapkin, PhD**, Albert Einstein College of Medicine, Bronx, NY, United States

Exhibits Open and Break 9:45 am – 10:30 am

South Convention Lobby

Meet the Authors 9:45 am – 10:30 am

Poster Session

Grand Ballroom 1

Concurrent Oral Sessions 10:30 am – 12:00 pm

(201) Mixed Methods (MT)

Tower Court A

(202) Communication (CP)

Tower Court B

(203) Adolescents (PP)

Tower Court C

(204) CAT (FR)

Tower Court D

ISOQOL Members Meeting and Lunch 12:00 pm – 2:00 pm

Grand Ballroom 2

The 2011 Members Meeting will include brief updates from the ISOQOL Leadership regarding the previous year's activities, and plans for the upcoming year, including the 2012 Annual Conference in Budapest, Hungary. ISOQOL encourages all members to attend this session. Lunch will be provided to those that pre-registered for the meeting. This is a great opportunity to learn more about what ISOQOL has to offer you and how you can get involved with ISOQOL.

Program Schedule

Friday, October 28, *continued*

Concurrent Oral Sessions 2:00 pm – 3:30 pm

(205) Cultural Adaptations (MT)

Tower Court A

(206) Response Shift (MT)

Tower Court B

(207) Modern Psychometric Approaches (MT)

Tower Court C

(208) Family, Caregivers, and Social Support (MT)

Tower Court D

Exhibits Open and Break 3:30 pm – 4:00 pm

South Convention Lobby

Poster Tour 3:30 pm – 4:00 pm

Grand Ballroom 1

Concurrent Oral Sessions 4:00 pm – 5:30 pm

(209) Utilities (PP)

Tower Court A

(210) Measure Development and Evaluation (CP)

Tower Court B

(211) Frontiers of Quality of Life Research (FR)

Tower Court C

(212) Adapting PROM Instruments (MT)

Tower Court D

Saturday, October 29

Registration Desk 7:00 am – 3:00 pm

South Convention Lobby

Poster Hall 7:00 am – 8:00 pm

Grand Ballroom 1

Exhibits Open and Continental Breakfast 7:30 am – 8:30 am

South Convention Lobby

President's Award 9:00 am – 9:15 am

Grand Ballroom 2

Join ISOQOL President, **Carol M. Moynour**, PhD, in recognizing the 2011 President's Award winner, **Carolyn C. Gotay**, PhD, for her contributions to and global promotion of health related quality of life through her dedication to primary cancer prevention.

Personalized Health 9:15 am – 10:30 am

Care Plenary

Genetics and QOL: How the Interface Can Impact Research and Practice

Organized by the Personalized Health Care Subcommittee

Grand Ballroom 2

Chair: **Cynthia Gross**, PhD, University of Minnesota, Pharmacy & Nursing, Minneapolis, MN, United States

Speakers: **Meike Bartels**, PhD, Dept. of Biological Psychology, Free University Amsterdam, Amsterdam, The Netherlands; and **Richard Goldberg**, MD, Richard M. Goldberg Distinguished Professor of Gastrointestinal Oncology, Chief of Hematology/Oncology, and Associate Director for Clinical Research, University of North Carolina, Lineberger Comprehensive Cancer Care Center, Chapel Hill, NC, United States

Exhibits Open and Break 10:30 am – 11:30 am

South Convention Lobby

Meet the Authors Poster Session and Poster Tour 10:30 am – 11:30 am

Grand Ballroom 1

Exhibits Open and Lunch on Your Own 11:30 am – 1:00 pm

Concurrent Oral Sessions 1:00 pm – 2:30 pm

(301) Cancer (PP)

Tower Court A

(302) Condition Specific (CP)

Tower Court B

(303) Frontiers of Quality of Life Research (FR)

Tower Court C

(304) Modern Psychometric Methods (MT)

Tower Court D

Concurrent Symposia Sessions 2:30 pm – 4:15 pm

(4) **Tricks of the Trade: Advice for Investigators in QOL Research**

Tower Court A

(5) **Evaluation of Dimensionality and Model Fitting for IRT Analysis**

Tower Court B

(6) **How Can Methodological Innovation Occur in Health-Related Quality-of-Life Research?**

Tower Court C

Program Schedule

Saturday, October 29, *continued*

Donna Lamping Memorial 4:30 pm – 5:30 pm

Windows

Earlier this year we lost ISOQOL Past President, Donna Lamping, PhD to illness. Join us in remembering Donna and her contributions to ISOQOL as a leader, a colleague and as a friend.

Closing Dinner at the Denver Art Museum 7:00 pm – 10:00 pm

*Raymond T. and Sally C. Duncan Pavilion, Denver Art Museum
100 West 14th Avenue Parkway*

The Closing Dinner will be held at the Denver Art Museum, in the beautiful Duncan Pavilion. Enjoy some of the city's most unique architecture from the Duncan Pavilion terrace, or marvel at the Rocky Mountains from the panoramic windows. Start thinking of your favorite songs, because after dinner, sit back or get up and dance to the Dueling Piano performance. Tickets are required for this event. If you have not purchased a ticket, please visit the Registration Desk for ticket availability.

Congratulations to the 2011 ISOQOL Scholarship Recipients!

New Investigators Scholarship

Karl Bagraith, *The University of Queensland, Australia*

Niklas Bobrovitz, *University of Calgary, Canada*

Maria Chow, *National Centre for Immunisation Research and Surveillance, Australia*

Catherine Golics, *Centre for Socioeconomic Research, Cardiff University, United Kingdom*

Yash Jalundhwala, *University of Illinois at Chicago, United States*

Sally Wilson, *Robert Jones and Agnes Hurt Orthopaedic and District Hospital NHS Trust, United Kingdom*

Developing Country Scholarship

Cristiane Bendo, *Federal University of Minas Gerais, Brazil*

Subhas Pandit, *B.P. Koirala Memorial Cancer Hospital, Nepal*

A special thank you to all who have supported the ISOQOL Scholarship Funds for helping make these awards possible.



EORTC Quality of Life Group

The EORTC Quality of Life Group develops measures for quality of life and patient-reported outcomes and supports their use in cancer clinical trials.

Our core cancer questionnaire EORTC QLQ-C30 has many supplementary modules for different cancer sites. We were amongst the first to produce formal guidelines for development of questionnaires. We have an active research programme including methodology and clinical applications, and are constantly developing and validating new modules. The questionnaires are translated into over 70 languages through rigorous translation procedures and quality assurance, and we have a strong research interest in cross cultural issues. We are currently developing a CAT version of the EORTC QLQ-C30.

We are a multi-disciplinary group of clinicians and researchers, coming from over 15 European countries plus Canada, Australia, USA, Taiwan, Japan, and Brazil. We organise workshops and plenary sessions twice a year and those interested in collaborating in our research are welcome to join us.

Chairman: Mogens Groenvold

Membership issues: Susanne Singer

Meetings organisation: Fabio Efficace

mold@sund.ku.dk

Susanne.Singer@medizin.uni-leipzig.de

f.efficace@gimema.it

For more information on the EORTC Quality of Life Group and its activities, please visit our website:

<http://groups.eortc.be/qol>

Academic users can download the questionnaires and the user's agreement directly from:

http://groups.eortc.be/qol/questionnaires_downloads.htm

Concurrent Oral Sessions

Thursday, October 27, 11:00 am - 12:30 pm

Oral Session 101: Cancer and Quality of Life (FR)

Chair: Sandra A. Mitchell, PhD CRNP AOCN
Tower Court A

(449) Longitudinal Changes in Emotional Distress among Cervical Cancer Survivors

Lari Wenzel, Kathryn Osann, Susie Hsieh, Kelly Biegler, Sandra Sapington, Diana Marquez, Edward Nelson, University of California, Irvine, Irvine, CA, United States

(353) Identifying Core HRQL Domains: A Case Study in Oesophageal Cancer

Rhiannon C. Macefield, University of Bristol, Bristol, United Kingdom; Marc Jacobs, Amsterdam Medical Center, University of Amsterdam, Amsterdam, The Netherlands; Natalie S. Blencowe, University of Bristol, Bristol, United Kingdom; Ida J. Korfage, Erasmus MC, University Medical Centre Rotterdam, Rotterdam, The Netherlands; Joanna Nicklin, Sara T. Brookes, University of Bristol, Bristol, United Kingdom; Mirjam AG Sprangers, Academic Medical Center, University of Amsterdam, Amsterdam, The Netherlands; Jane M. Blazeby, University of Bristol, Bristol, United Kingdom

(313) Monitoring Patient-Reported Outcomes with an Asthma Web-Based Disease Management Tool

Sara Ahmed, McGill University, Montreal, QC, Canada; Susan J. Bartlett, Division of Clinical Epidemiology and Respiratory Epi and Clinical Research Unit, Royal Victoria Hospital, Montreal, QC, Canada; Cheng Jung Lin, McGill University, School of Physical and Occupational Therapy, Montreal, QC, Canada; Iphigenia Symeonidis, Owis Eillayan, McGill University, Faculty of Medicine & School of Physical and Occupational Therapy, Montreal, QC, Canada;

(434) A Path Model of Quality of Life in People with Advanced Cancer using Rasched Latents

Ana Maria Rodriguez, Nancy E. Mayo, Bruno Gagnon, McGill University, Montreal, QC, Canada

Oral Session 102: Multiple Sclerosis and Pain (CP)

Chair: Melanie Calvert, PhD
Tower Court B

(298) Comparison of Pain Behaviors in Multiple Sclerosis, Back Pain, and Arthritis

Karon Cook, Feinberg School of Medicine, Northwestern University, Chicago, IL, United States; Alyssa Bamer, Dagmar Amtmann, Mark Jensen, Kurt Johnson, University of Washington, Seattle, WA, United States; Leigh Callahan, UNC Thurston Arthritis Research Centre, Chapel Hill, NC, United States; Jiseon Kim; Francis Keefe, Duke University, Durham, NC, United States; Dennis Revicki, Center for Health Outcomes Research, United BioSource Corporation, Bethesda, MD, United States; Toni S. Roddey, Texas Woman's University, TX, United States

(471) Online collection of patient reported outcomes for persons with multiple sclerosis

Kristin M. Khalaf, Denise R. Globe, Allergan, Irvine, CA, United States; Edward; P. Armstrong, Daniel C. Malone, University of Arizona, Tucson, AZ, United States; Karin Coyne, United BioSource Corporation, Bethesda, MD, United States

(470) A review of the effect of clinical interventions on health-related quality of life in persons with multiple sclerosis

Ayse Kuspinar, Nancy E. Mayo, McGill University, Montreal, QC, Canada

(98) Symptom Profiles in MS: Comparing Symptoms and Quality of Life Indicators of a Large Sample of Individuals with MS to Population Norms

Alyssa Bamer, Kara McMullen, Dagmar Amtmann, University of Washington, Seattle, WA, United States

Oral Session 103: Preferences and Utilities (MT)

Chair: Hwee Lin Wee, PhD
Tower Court C

(455) Comparing the use of unique cutpoints against standard cutpoints when evaluating symptom burden

Tito R. Mendoza, Univ. of Texas, M.D. Anderson Cancer Center, Houston, TX, United States; Jared Minchonski, University of Rochester Medical Center, Rochester, NY, United States; Brad Barney, Xin Shelley Wang, Charles Lu, Charles Cleeland, University of Texas MD Anderson Cancer Center, Houston, TX, United States;

(503) Agreement Between Orthogonal and Oblique Methods for Scoring Physical and Mental Health Outcomes in Randomized Trials of Clinically-Efficacious Treatments

John E. Ware Jr., Daniel Frenkl, UMass Medical School, Worcester, MA, United States; Mikel Strom, JWRG, Incorporated, Worcester, MA, United States

(293) Comparative Validity, Reliability and Responsiveness of Single and Multiple Item Measurement of Pain in Breast Cancer Patients with Aromatase Inhibitor Therapy

Qiuling Shi, Huifang Lu, Sharon H. Giordano, Charles S. Cleeland, University of Texas MD Anderson Cancer Center, Houston, TX, United States

(292) Use of divergent imputation for the evaluation of the impact of missing data on the stability of QoL treatment effects in clinical trials.

Corneel Coens, Andrew Bottomley, EORTC HQ, Brussels, Belgium; Aeilko H. Zwinderman, Mirjam AG Sprangers, University of Amsterdam, Amsterdam, The Netherlands

Track Sessions: (CP) Clinical Practice (FR) Frontiers of Quality of Life Research (MT) Methods and Theory (PP) Populations and Policy

Concurrent Oral Sessions

Thursday, October 27, 11:00 am - 12:30 pm, *continued*

Oral Session 104: Health Policy and Resource Allocation (PP)

Chair: Ming-Ann Hsu, MPH
Tower Court D

(287) The effect of age and socioeconomic characteristics on general population values for hypothetical health states

Paulos Teckle, Stuart Peacock, Helen McTaggart-Cowan, Canadian Centre for Applied Research in Cancer Control (ARCC), Vancouver, BC, Canada; Chris McCabe, University of Leeds, United Kingdom; Jeff Richardson, Monash University Australia, Victoria, Australia

(208) The impact of adding a generic dimension to a condition-specific preference-based measure

Tracey A. Young, John E. Brazier, Donna Rowen, Aki Tsuchiya, SchARR, University of Sheffield, Sheffield, Yorkshire, United Kingdom; Yaling Yang, HERG, Brunel University, Middlesex, United Kingdom

(270) The impact of condition labelling on health state utility values

Donna Rowen, John E. Brazier, Aki Tsuchiya, Tracey Young, Rachel Ibbotson, University of Sheffield, Sheffield, United Kingdom

(445) Dealing with Influential Observations in Analyses of EQ-5D Index Scores: A Comparative Evaluation of Robust Regression Estimators

James W. Shaw, Abbott Laboratories, Westmont, IL, United States; A. Simon Pickard, Wendy Cheng, University of Illinois at Chicago, Chicago, IL, United States

Friday, October 28, 10:30 am - 12:00 pm

Oral Session 201: Mixed Methods (MT)

Chair: Leli Pedro, DNSc RN, OCN, CNE
Tower Court A

(257) Comparison of Strategies used to Test Measurement Invariance on Longitudinal Factor Analysis

Bellinda L. King-Kallimanis, AMC University of Amsterdam, Dept. of Medical Psychology, Amsterdam, The Netherlands; Frans J. Oort, Graduate School of Child Development and Education, University of Amsterdam, Amsterdam, The Netherlands; Meike Morren, Tilburg School of Social and Behavioral Sciences, Tilburg University, Tilburg, The Netherlands; Carol Tishelman, Department of Learning, Informatics, Management and Ethics, Karolinska Institution, Stockholm, Sweden; Mirjam AG Sprangers, Department of Medical Psychology, AMC University of Amsterdam, Amsterdam, The Netherlands

(136) Understanding Appraisal Processes Underlying the Thentest: A Mixed Methods Investigation

Carolyn E. Schwartz, DeltaQuest Foundation, Inc., Concord, MA, United States; Bruce Rapkin, Albert Einstein College of Medicine, Bronx, NY, United States

(308) A mixed methods approach to adapting health-related quality of life measures for use in routine

Ada Keding, Clare Harley, Elena E. Takeuchi, Sally Taylor, Kate Absolom, Julia MB Brown, Galina Velikova, University of Leeds, Leeds, United Kingdom

(412) Pushing the Boundaries of Quality of Life Research: Using Patients' Words in a Gap Analysis of PRO Measures

Vasudha Mukherjee Bal, Kathryn E. Lasch, Mapi Values, Boston, MA, United States

Oral Session 202: Communications (CP)

Chair: Roxanne Jensen, PhD
Tower Court B

(395) Establishing Content Validity of the Give Youth a Voice Questionnaire for use in Pediatric Oncology: A Qualitative Study

Areej Shahbaz, University of Ottawa, Ottawa, ON, Canada; Anne Klassen, McMaster University, Hamilton, ON, Canada; Rooma Sinha, David Dix, BC Children's Hospital, Vancouver, BC, Canada; Leila Amin, Leeat Granek, Zahava Rosenberg-Yunger, McMaster University, Hamilton, ON, Canada

(456) Maximizing Patient Feedback: Analyzing open-ended qualitative data obtained through natural language processing software

Karin S. Coyne, Mary Kay Margolis, United BioSource Corporation, Bethesda, MD, United States; Zoe S. Kopp, Pfizer Inc., New York, NY, United States; Stephen Doogan, Paul Nemirousky, Urban Interactions, Inc. (DBA dMetrics), Somerville, MA, United States

(410) Does providing individual feedback on subjective judgements of Quality of Life improve wellbeing?

Alison M. Llewellyn, Suzanne M. Skevington University of Bath, Bath, United Kingdom

(259) Impact of Patient Reported Outcomes in Oncology - A Longitudinal Analysis of Patient - Physician Communication

Galina Velikova, Elena Takeuchi, Ada Keding, Noha Awad, University of Leeds, Leeds, United Kingdom; Uschi Hofman, Calderdale & Huddersfield, NHS Foundation Trust, Huddersfield, United Kingdom; Lyndsay Campbell, Peter J. Selby, Julia MB. Brown, University of Leeds, Leeds, United Kingdom

Oral Session 203: Adolescents (PP)

Chair: Madeleine King, PhD
Tower Court C

(249) Impact of adolescent's tooth injuries on family's quality of life

Cristiane B. Bendo, Mauro H. Abreu, Miriam P. Vale, Isabela A. Pordeus, Saul M. Paiva, Federal University of Minas Gerais, Belo Horizonte, Brazil

(481) Violence and Quality of Life Among Mexican High School Adolescents

Carlos Alejandro Hidalgo Rasmussen, Gerardo Jimenez Haro, University of Guadalajara, Jalisco, Mexico

Track Sessions: (CP) Clinical Practice (FR) Frontiers of Quality of Life Research (MT) Methods and Theory (PP) Populations and Policy

Concurrent Oral Sessions

Friday, October 28, 10:30 am - 12:00 pm, *continued*

(169) Quality of Life (QoL) of Washington State Youth Perceived as Gay, Lesbian, or Bisexual: The Need for “It Gets Better”

Donald Patrick, Jon Y. Huang, Todd E. Edwards, *University of Washington, Seattle, WA, United States*

(81) Measuring quality of life for caregivers of children with Autism Spectrum Disorder for use in cost-effectiveness evaluations: A mixed method approach

Karen A. Kuhlthau, *Center for Child and Adolescent Health Policy, Boston, MA, United States*; Nalin Payakachat, *Division of Pharmaceutical Evaluation and Policy, Little Rock, AR, United States*; Jennifer Delahaye, *Center for Child and Adolescent Health Policy, Boston, MA, United States*; Jeff Pyne, *Center for Mental Health Outcomes Research, North Little Rock, AR, United States*; Erica Kovacs, *Columbia Developmental Neuropsychiatry Program, New York, NY, United States*; John Mick, *Tilford Health Policy and Management, Little Rock, AR, United States*

Oral Session 204: CAT (MT)

Chair: Stefan Cano, BSc PhD

Tower Court D

(369) Using a Computerized Adaptive Test of Role Function to Evaluate Impairment Related to Mental Health

Milena D. Anatchkova, *University of Massachusetts Medical School, Worcester, MA, United States*; Matthias Rose, *Quality Metric, Berlin, Germany*; John E. Ware, Jr., *University of Massachusetts Medical School, Dept. of Quantitative Health Sciences, Worcester, MA, United States*; Jakob B. Bjorner, *National Research Centre for the Working Environment, Copenhagen, Denmark*

(206) Exploring the Feasibility of the Use of PROMIS Computer Adaptive Testing in Clinical Trials

Steven I. Blum, Vicki Ploscowe, Rebecca S. Atwell, Sheryn L. Bruso, Stavros Tourkodimitris, Allan C. Spera, *Forest Research Institute, Jersey City, NJ, United States*

(319) The Accuracy of Computerized Adaptive Tests in Heterogeneous Populations

Richard Sawatzky, *Trinity Western University, Langley, BC, Canada*; Pamela A. Ratner, Jacek A. Kopec, Bruno D. Zumbo, *University of British Columbia, Vancouver, BC, Canada*

(140) Development and Analysis of PROMIS Pain Intensity Scale

Wen-Hung Chen, Dennis A. Revicki, *United BioSource Corporation, Bethesda, MD, United States*; Dagmar Amtmann, Mark P. Jensen, *Department of Rehabilitation Medicine, University of Washington, Seattle, WA, United States*; Francis J. Keefe, *Psychology and Neuroscience, Duke University, Durham, NC, United States*; David Cella, *Department of Medical Social Sciences, Northwestern University Feinberg School of Medicine, Chicago, IL, United States*

Friday, October 28, 2:00 pm - 3:30 pm

Oral Session 205: Cultural Adaptations (MT)

Chair: Susan Bartlett, PhD

Tower Court A

(311) Cultural adaptations of the EORTC quality of life measures: preliminary analysis

Dagmara Kulis, Maria Arnott, *EORTC, Brussels, Belgium*; Eva Greimel, *Department of Obstetrics and Gynecology, Medical University Graz, Graz, Austria*; Andrew Bottomley, *EORTC, Brussels, Belgium*; Michael Koller, *Center for Clinical Studies, University Hospital Regensburg, Regensburg, Germany*

(307) Cross-cultural development of an EORTC questionnaire module to assess quality of life (QoL) in patients with chronic myeloid leukemia (CML).

Fabio Efficace, *Health Outcomes Research Unit, Italian Group for Adult Hematologic Diseases, GIMEMA, ROME, Italy*; Massimo Breccia, *Department of Hematology, University of Rome, Rome, Italy*; Susanne Saussele, Ute Kossak, *Med. Faculty Mannheim, University of Heidelberg, Mannheim, Germany*; Giovanni Caocci, *Department of Hematology, Binaghi Hospital, Cagliari, Italy*; Mirjam AG Sprangers, *Academic Medical Center, University of Amsterdam, Amsterdam, The Netherlands*; Weichu Chie, *National Taiwan University, Taipei, Taiwan*; Adel Naeem, *University of Baghdad, Baghdad, Iraq*; Ourania Nicolatou-Galitis, *Clinic of Hospital Dentistry, Dental Oncology Unit, Dental School, University of Athens, Athens, Greece*; Marco Vignetti, *Health Outcomes Research Unit, GIMEMA Data Center, Rome, Italy*; Kim Cocks, *Clinical Trials Research Unit, University of Leeds, Leeds, United Kingdom*; Annarita Cardoni, Franco Mandelli, *Health Outcomes Research Unit, GIMEMA Data Center, Rome, Italy*

(118) Turkish Adaptation of Beach Center Family Quality of Life Scale

Bekir Fatih Meral, *Sakarya University, Sakarya, Turkey*; Atilla Cavkaytar, *Anadolu University, Eskisehir, Turkey*

(378) Development of the WHOQOL-Bref and DIS-QOL version in Brazilian Sign Language

Neuma Chaveiro, Soraya Bianca Duarte, Adriana Ribeiro Freitas, Maria Alves Barbosa, Celmo Celso Porto, *Universidade Federal de Goiás, Goiânia, Brazil*; Marcelo Almeida Fleck, *Universidade Federal do Rio Grande do Sul, Porto Alegre, Brazil*

Oral Session 206: Response Shift (MT)

Chair: Ana Maria Rodriguez, MSc BSc PT

Tower Court B

(274) Identifying Response Shift Statistically at the Individual Level in a Cohort with Inflammatory Bowel Disease

Susan Scott, Nancy E. Mayo, *McGill University, Montreal, QC, Canada*; Lisa M. Lix, *University of Saskatchewan, Saskatoon, SK, Canada*

Track Sessions: (CP) Clinical Practice (FR) Frontiers of Quality of Life Research (MT) Methods and Theory (PP) Populations and Policy

Concurrent Oral Sessions

Friday, October 28, 2:00 pm - 3:30 pm, *continued*

(214) Detecting Different Forms of Response Shift with Structural Equation Modeling: An Application to Inflammatory Bowel Disease

Lisa M. Lix, University of Saskatchewan, Saskatoon, SK, Canada; Yuhui Huang, University of Regina, Regina, SK, Canada; Tolulope T. Sajobi, University of Saskatchewan, Saskatoon, SK, Canada; Richard Sawatzky, Trinity Western University, Langley, BC, Canada; Juxin Liu, University of Saskatchewan, Saskatoon, SK, Canada; Nancy E. Mayo, McGill University, Montreal, QC, Canada

(295) Response Shift was Identified after Stroke and in Healthy Aging in the Manitoba Follow-up Study

Ruth Barclay-Goddard, Robert Tate, School of Medical Rehab, University of Manitoba, Dept. of Physical Therapy, Winnipeg, MB Canada

(252) Relative Importance Measures to Detect Reprioritization Response Shift

Tolulope T. Sajobi, Lisa M. Lix, University of Saskatchewan, Saskatoon, SK, Canada; Yuhui Huang, University of Regina, Regina, SK, Canada; Richard Sawatzky, Trinity Western University, Langley, BC, Canada; Juxin Liu, University of Saskatchewan, Saskatoon, SK, Canada; Nancy E. Mayo, McGill University Health Center, Montreal, QC, Canada

Oral Session 207: Modern Psychometric Approaches (MT)

Chair: Thomas Atkinson
Tower Court C

(363) Differential item functioning in depressive symptoms associated with post-traumatic growth: a study on long-term survivors of bone-marrow transplant

Kelly Kenzik, Department of Epidemiology, I-Chan Huang, Elizabeth Shenkman, Department of Health Outcomes & Policy, University of Florida, Gainesville, FL, United States

(472) Differential Item Functioning in Pediatric Quality of Life Measures Associated with Body Weights using Self-Reports and Parent-Proxy Reports

Pranav Gandhi, South College, Knoxville, TN, United States; I-Chan Huang, University of Florida, Gainesville, FL, United States

(225) Developing an Item Bank for Emotional Vitality: a Methodological Overview

Skye P. Barbic, Nancy E. Mayo, McGill University, Montreal, QC, Canada

(479) Psychometric analysis of the Daily Spiritual Experience Scale using the Rasch Method

Miako Kimura, Acacia Lima de Oliveira, School of Nursing, University of Sao Paulo, São Paulo, Brazil; Neusa Sicada Rocha, School of Medicine, Federal University of Rio Grande do Sul, Porto Alegre, Brazil

Oral Session 208: Family, Caregivers, and Social Support (MT)

Chair: Joan Branin, PhD
Tower Court D

(429) A qualitative inquiry into the effects of disease on the family and the partner- "The Greater Patient"

Catherine J. Golics, Sam S. Salek, Centre for Socioeconomic Research, Cardiff University, Cardiff, United Kingdom; Mohammed K.A Basra, Andrew Y. Finley, Department of Dermatology and Wound Healing, Cardiff University, Cardiff, United Kingdom

(432) A novel health-related quality of life instrument for family members/partners of psoriasis patients, the Psoriasis Family Index (PFI): Rasch analysis

Sam S. Salek, Centre for Socioeconomic Research, Cardiff University, Cardiff, United Kingdom; Mohammad K.A. Basra, Anne Marie Zammit, Andrew Y. Finley, Department of Dermatology and Wound Healing, Cardiff University, Cardiff, United Kingdom

(183) Understanding the Role of Parent Activation During the First Six Months After Pediatric Hematopoietic Stem Cell Transplant

Brian W. Pennarola, Susan K. Parsons, Angie M. Rodday, The Health Institute, Tufts Medical Center, Boston, MA, United States

(145) Parent-Child Perceptions of Health-Related Quality of Life in Pediatric Patients with Beta-Thalassemia

Francesco Cottone, GIMEMA, Rome, Italy; Fabio Efficace, Health Outcomes Research Unit, Italian Group for Adult Hematologic Diseases Data Center, Rome, Italy; Francesca Ciotti, Maria Grazia Roncarolo, Pediatric Immuno-Hematology and BMT Unit, IRCCS San Raffaele Hospital, Milan, Italy; Adriana Vacca, Eugenia Piras, Roberto Littera, Sandra Atzeni, Bone Marrow Transplant Center, R. Binaghi Hospital, Cagliari, Italy; Raji Suleiman, Markous Dawood Thalassaemia Center, Hevi Pediatric Hospital, Duhok, Iraq; Gary Stephen Collins, Centre for Statistics in Medicine, University of Oxford, Oxford, United Kingdom; Fabio Ciceri, Pediatric Immuno-Hematology and BMT Unit, IRCCS San Raffaele Hospital, Milan, Italy; Franco Mandelli, Health Outcomes Research Unit, Italian Group for Adult Hematologic Diseases Data Center, Rome, Italy; Giorgio La Nasa, Department of Hematology, University of Cagliari, R. Binaghi Hospital, Cagliari, Italy

New Ways to Stay Connected

Find us on
Facebook



twitter #isoqol11

LinkedIn

Concurrent Oral Sessions

Friday, October 28, 4:00 pm - 5:30 pm

Oral Session 209: Utilities (PP)

Chair: Nan Luo, PhD
Tower Court A

(154) Mapping the Functional Assessment of Cancer Therapy-General or -Colorectal to Preference-based Values Measured by SF-6D in Patients with Colorectal Neoplasm

Carlos King Ho Wong, Cindy Lo Kuen Lam, Ka Ping Ma, Department of Family Medicine and Primary Care, The University of Hong Kong, Hong Kong Island, Hong Kong; Sarah M. McGhee, Department of Community Medicine, School of Public Health, The University of Hong Kong, Hong Kong Island, Hong Kong; Wai Lun Law, Jensen Tung Chung Poon, Department of Surgery, The University of Hong Kong, Hong Kong Island, Hong Kong; Pierre Chan, Queen Mary Hospital, HKSAR, Hong Kong Island, Hong Kong; Dora Lai Wan Kwong, Janice Tsang, Department of Clinical Oncology, The University of Hong Kong, Hong Kong Island, Hong Kong; Donna L. Rowen, John E. Brazier, The University of Sheffield, Sheffield, United Kingdom

(407) Health State Selection in EQ-5D Valuation Studies:

Impact on Logical Inconsistencies and Predictive Accuracy

Yash Jalundhwala, James W. Shaw, Simon A. Pickard, Surrey Walton, University of Illinois at Chicago, Chicago, IL, United States; Jan Van Busschbach, Erasmus MC, Rotterdam, The Netherlands

(467) Adaptation of existing PRO measures for use in additional patient populations: The BREAST-Q® BCT Module

Amie M. Scott, Memorial Sloan-Kettering Cancer Center, New York, NY, United States; Anne F. Klassen, McMaster University, Hamilton, ON, Canada; Andrea L. Pusic, Memorial Sloan-Kettering Cancer Center, New York, NY, United States; Stefan J. Cano, Plymouth College of Medicine and Dentistry, Plymouth, United Kingdom; Peter G. Cordeiro, Monica Morrow, Sabrina Jhanwar, Colleen M. McCarthy, Memorial Sloan-Kettering Cancer Center, New York, NY, United States

(162) A General Framework and a New Nonparametric Estimator for Predicting Utilities for Joint Health Conditions

Alex Z. Fu, Bo Hu, Cleveland Clinic, Cleveland, OH, United States



Life Inspired.

Patient Reported Outcomes Career Opportunities

We're passionate and rigorous about our science. For more than 30 years, Genentech has been at the forefront of the biotechnology industry, using innovative science to develop breakthrough medicines that improve the lives of people with serious or life-threatening diseases. We're also passionate about our people, our most important asset.

We are currently building out our Patient Reported Outcomes (PRO) organization, and are seeking experienced PRO Specialists to join our Global Outcomes organization, based in our South San Francisco, CA, headquarters. These individuals will lead PRO implementation activities for a molecule and provide support in developing global PRO strategies for molecules within a therapeutic area.

Now a member of the Roche Group, Genentech has multiple medicines on the market for cancer and other serious illnesses. We are an equal opportunity employer and have placed on the FORTUNE "100 Best Companies to Work For" list for 13 consecutive years.

Join us as we continue to tackle medicine's most challenging problems and live a life inspired. For a complete position description and to apply, please visit careers.gene.com and search for **00378260** in the keyword search field.

In January 2011, Genentech was named to FORTUNE's list of the "100 Best Companies to Work For" for the 13th consecutive year.



Genentech
A Member of the Roche Group

careers.gene.com

Track Sessions: (CP) Clinical Practice (FR) Frontiers of Quality of Life Research (MT) Methods and Theory (PP) Populations and Policy

Concurrent Oral Sessions

Friday, October 28, 4:00 pm - 5:30 pm, *continued*

Oral Session 210: Measure Development and Evaluation (CP)

Chair: Juan J. Dapuelto, MD PhD
Tower Court B

(409) A new theoretical model, combining clinical variables and quality of life, leads to reconsideration of our clinical understanding of autoimmune hypothyroidism

Torquil Watt, Copenhagen University Hospital, Copenhagen, Denmark; Jakob B. Bjørner, National Research Centre for the Working Environment, Copenhagen, Denmark; Laszlo Hegedüs, Odense University Hospital, Odense, Denmark; Steen J. Bonnema, Odense University Hospital, Odense, Denmark; A. K. Rasmussen, Ulla Feldt-Rasmussen, Mogens Groenvold, Copenhagen University Hospital, Copenhagen, Denmark

(218) Preliminary validation of a measure of confidence to perform sexual intercourse in men with erectile dysfunction

Michael Meldahl, Risa P. Hayes, Eli Lilly and Company, Indianapolis, IN, United States

(364) Quality of life outcomes in postmenopausal women attending a specialist metabolic bone clinic

Sally Wilson, Christopher A. Sharp, Michael W. J. Davie, Robert Jones and Agnes Hunt NHS Trust, United Kingdom

(211) Development of an Instrument for Measuring Patient and Family Perceptions of Trauma Care

Niklas Bobrovitz, Henry T. Stelfox, University of Calgary, Calgary, AB, Canada

Oral Session 211: Frontiers of Quality of Life Research (FR)

Chair: Bellinda King-Kallimanis, MS
Tower Court C

(198) Happiness and Capabilities: Conceptual Argument

Tadashi Hirai, University of Tokyo, Tokyo, Japan

(480) Brain Mapping of Generic and Disease Specific PROs

Nancy E. Mayo, Claude Steriade, McGill University, Montreal, QC, Canada; Lesley Fellows, Montreal Neurological Institute, Montreal, QC, Canada

(478) How Cognitive-Linguistic Factors Contribute to Judgments of Quality of Life

Ivan Barofsky, The Quality of Life Institute, United States

(277) The role of health-related quality of life data in the drug approval processes in the USA and Europe: A review of guidance documents and authorizations of medicinal products from 2006 to 2010

Patrick Marquis, Martine Caron, Marie-Pierre Emery, MAPI Research Trust, Lyon, France; Jane A. Scott, MAPI Values, Bollington, United Kingdom; Benoit Arnould, MAPI Values, Lyon, France; Catherine Acquadro, MAPI Research Trust, Lyon, France

Oral Session 212: Adapting PROM Instruments (MT)

Chair: Kevin Weinfurt, PhD
Tower Court D

(458) Development of a Patient-Reported Outcome Measure and A Clinician-Reported Outcome Measure to Assess Satisfaction and Preference with Pharmacological Stress Agents for Single Photon Emission Computed Tomography Myocardial Perfusion Imaging

Stacie Hudgens, Mapi Values, Boston, MA, United States; Smita Kothari, James Spalding, Astellas Pharma US Inc, Deerfield, IL, United States

(133) Adaptation of a method for developing a preference-based measure from a descriptive health-related quality of life measure (HRQOL): a confirmatory versus exploratory approach for the cancer-specific QLQ-C30

Daniel S. J. Costa, Madeleine T. King, Psycho-oncology Co-operative Research Group (PoCoG), School of Psychology, Sydney, Australia; Neil K. Aaronson, Netherlands Cancer Institute, Amsterdam, The Netherlands; John E. Brazier, Health Economics and Decision Science, Sheffield, United Kingdom; David F. Cella, Department of Medical Social Sciences, Northwestern University, Chicago, IL, United States; Peter M. Fayers, Department of Public Health, Aberdeen Medical School, Aberdeen, United Kingdom; Julie S. Pallant, University of Melbourne, Shepparton, Australia; Stuart Peacock, Canadian Centre for Applied Research in Cancer Control, Vancouver, Canada; Simon Pickard, Department of Pharmacy Practice, University of Illinois at Chicago, Chicago, IL, United States; Donna Rowen, Health Economics and Decision Science, University of Sheffield, Sheffield, United Kingdom; Galina Velikova, St James's Institute of Oncology, Leeds, United Kingdom; Tracey Young, Health Economics and Decision Science, University of Sheffield, Sheffield, United Kingdom

(265) Translation of the National Institutes of Health Stroke Scale (NIHSS) List of Words: a Challenging Task

Katrin Conway, Elisabeth Rendu, MAPI Research Trust, Lyon, France; Carol Cooke, Pfizer, Sandwich, United Kingdom; Patrick Lyden, Cedars-Sinai Medical Center, Los Angeles, CA, United States; Catherine Acquadro, MAPI Research Trust, Lyon, France

(344) Evaluating comprehension of PROMIS I Depression and Anxiety calibrated Spanish items in native Spanish-speakers persons living with HIV/AIDS

Anne M. Skalicky, Rosa Solorio, University of Washington, Seattle, WA, United States; Daniela Cardenas, University of California San Diego, San Diego, CA, United States; Miriam Valdovinos, University of Washington, Seattle, WA, United States; Leo S. Morales, Group Health Cooperative, Group Health Research Institute, Seattle, WA, United States

Track Sessions: (CP) Clinical Practice (FR) Frontiers of Quality of Life Research (MT) Methods and Theory (PP) Populations and Policy

Concurrent Oral Sessions

Saturday, October 29, 1:00 pm - 2:30 pm

Oral Session 301: Cancer (PP)

Chair: David Eton, PhD
Tower Court A

(315) Does age really matter? Differences in item selection of health-related quality of life issues in older people with cancer

Anne-Sophie Darlington, Colin D. Johnson, University Surgical Unit, University of Southampton School of Medicine, United Kingdom; Deborah Fitzsimmons, College of Human and Health Sciences, Swansea University, United Kingdom

(268) A population-based study of quality of life in cancer patients receiving palliative care

Mogens Groenvold, University of Copenhagen, Bispebjerg Hospital, Research Unit, Palliative Medicine, Copenhagen, Denmark; Sara Korngut, Research Unit, Palliative Medicine, Copenhagen, Denmark; Mette A. Neergaard, Palliative Team, Aarhus, Denmark; Helle Timm, Danish Knowledge Centre for Palliative Care, Copenhagen, Denmark; Anna T. Johnsen, Research Unit, Palliative Medicine, Copenhagen, Denmark

(459) Investigating the mechanism between psychosocial factors and health outcomes in hematopoietic cell transplantation survivors

Mary A. Anderson, I-Chan Huang, Department of Health Outcomes and Policy, University of Florida, Gainesville, FL, United States

(326) The Socio-Cultural and Healthcare Correlates of Health-Related Quality of Life Outcomes in Latina Breast Cancer Survivors

Roxanne E. Jensen, Georgetown University, Lombardi Comprehensive Cancer Center, Washington, DC, United States; Kristi D. Graves, Janet Canar, Monique Perret-Gentil, Georgetown University, Washington, DC, United States; Larisa Caicedo, Nueva Vida, Washington, DC, United States; Jeanne Mandelblatt, Georgetown University, Washington, DC, United States

Oral Session 302: Condition Specific (CP)

Chair: Cindy LK Lam, MD
Tower Court B

(331) Developing a Patient-Reported Outcome Measure for Cleft-Lip and/or Palate Patients

Anne Klassen, McMaster University, Department of Pediatrics, Hamilton, ON, Canada; Tim Goodacre, University of Oxford, Oxford, United Kingdom; Karen Wong, The Hospital for Sick Children, Toronto, ON, Canada; Andrea Pusic, Memorial Sloan Kettering Cancer Center, New York, NY, United States; Stefan Cano, Peninsula College of Medicine and Dentistry, Plymouth, United Kingdom; Elena Tsangaris, Jessica Johnson, McMaster University, Hamilton, ON, Canada; Jessica Lawson, City University, London, United Kingdom; Iqra Syed, Sonika Kainth, Meghna Dua, McMaster University, Hamilton, ON, Canada; Christopher Forrest, The Hospital for Sick Children, Toronto, ON, Canada

(271) Missing elements in current head and neck patient reported outcome measures

Evan Matros, Claudia R. Albornoz, Patrick L. Reavey, Plastic Surgery Department, Memorial Sloan Kettering Cancer Center, New York, NY, United States; Stefan J. Cano, Peninsula College of Medicine and Dentistry, Plymouth, United Kingdom; Anne F. Klassen, Departments of Pediatrics and Clinical Epidemiology & Biostatistics, McMaster University, Hamilton, Canada; Andrea L. Pusic, Plastic Surgery Department, Memorial Sloan Kettering Cancer Center, New York, NY, United States

(272) Psychometric Evaluation of Self-Reported Pain and Disability Measures for Elbow Pathologies

Joshua I. Vincent, The University of Western Ontario, London, ON, Canada; Joy C. MacDermid, Graham King, Hand and Upper Limb Centre, London, ON, Canada; Ruby Grewal, University of Western Ontario, London, ON, Canada

(428) On the classification of post-traumatic growth and its association with patient-reported outcomes: a study on long-term survivors of bone-marrow transplant

I-Chan Huang, Kelly Kenzik Michelle Bishop, John Wingard, University of Florida, Gainesville, FL, United States

Oral Session 303: Frontiers of Quality of Life Research (FR)

Chair: Cicely Kerr, MSc PhD
Tower Court C

(356) Health-Related Quality of Life (HRQL) Reporting in Randomised Controlled Trials (RCTs): Results of an ISOQOL member survey

Melanie Calvert, Education Lead MRC Midland Hub Trials Methodology Research, The University of Birmingham, Birmingham, United Kingdom; Jane Blazeby, University of Bristol, Bristol, United Kingdom; Brenda Bass, Michael Brundage, Queen's University, Ontario, Canada; Presenting on behalf on the ISOQL Reporting Guidelines Task Force

(386) Using the SEER-MHOS Database to Evaluate the HRQOL of Medicare Advantage Beneficiaries with and without Cancer

Steven Clauser, National Cancer Institute, Bethesda, MD, United States; Chris Haffer, Centers for Medicare & Medicaid Services, Baltimore, MD, United States; Anita Ambis, National Cancer Institute, Bethesda, MD, United States; Ron Hays, University of California Los Angeles, Los Angeles, CA, United States; Rochelle Malinoff, Laura Giordano, Health Services Advisory Group, Phoenix, AZ, United States

(156) Development and testing of a screening questionnaire for psychosocial problems in onco-genetics

Neil K. Aaronson, Willem Eijzenga, Daniela E.E. Hahn, Irma Kluijft, Eveline M.A. Bleiker, NKI/AVL, Amsterdam, The Netherlands

(372) The differential association of background factors with measures of positive and negative mental health

Jocelyne M.R. Clench-Aas, Leif E. Aarå, Ragnhild B. Nes, Norwegian Institute of Public Health, Oslo, Norway

Track Sessions: (CP) Clinical Practice (FR) Frontiers of Quality of Life Research (MT) Methods and Theory (PP) Populations and Policy

Concurrent Oral Sessions

Saturday, October 29, 1:00 pm - 2:30 pm, *continued*

Oral Session 304: Modern Psychometric Methods (MT)

Chair: TBD
Tower Court D

(256) The Relationship Between Well-Being and Support Provided by Health and Social Services to Caregivers of People with Motor Neurone Disease

Michele Peters, Ray Fitzpatrick, Crispin Jenkinson, Department of Public Health, University of Oxford, Oxford, United Kingdom

(317) Validating the PROMIS® Sexual Function Brief Profile Measures


Kathryn Flynn, Li Lin, Carrie Dombeck, Maria Fawzy, Duke Clinical Research Institute, Durham, NC, United States; Amy Abernethy, Duke University Medical Center, Durham, NC, United States; Deborah Watkins Bruner, University of Pennsylvania School of Nursing, Philadelphia, PA, United States; Jennifer Reese, Johns Hopkins University School of Medicine, Bethesda, MD, United States; Bryce Reeve, Ashley Smith, National Cancer Institute, Bethesda, MD, United States; Kevin Weinfurt, Duke Clinical Research Institute, Durham, NC, United States

(329) Mood and Gender Effects on the Accuracy of 30-day Recall of Sexual Function

Kevin Weinfurt, Li Lin, Duke Clinical Research Institute, Durham, NC, United States; Joan Broderick, Stony Brook University, Stony Brook, NY, United States; Carrie Dombeck, Maria Fawzy, Duke Clinical Research Institute, Durham, NC, United States; Denise Snyder, Megan Williams, Duke University School of Nursing, Durham, NC, United States; Kathryn Flynn, Duke Clinical Research Institute, Durham, NC, United States

(290) Psychometric Evaluation of the Cushing's Quality of Life Questionnaire (CushingQOL)

Theresa M. Gilligan, Lauren Nelson, Lori D. McLeod, RTI Health Solutions, Research Triangle Park, NC, United States; Sonia Pulgar, Yanqiong Zhang, Novartis Pharmaceuticals Corporation, NJ, United States; Xavier Badia, IMS Health, Barcelona, Spain; Susan M. Webb, Universitat Autònoma de Barcelona, Barcelona, Spain; Mario Maldonado, Novartis Pharma, Basel, Switzerland



MAPI Institute & MAPI Research Trust
are two organizations of the MAPI Group specialised in Patient-Reported Outcomes (PROs) offering a wide range of expertise and research services:

Linguistic Validation of PRO & ClinRo instruments

- Expertise: Linguistic Validation of over 2500 instruments
- 150 languages covering 100 countries
- Translatability assessment
- Formatting and printing

Information

- Online databases:
 - ProQolid: detailed description of 700+ PRO and HRQL instruments (www.proqolid.org)
 - PROLabels: centralization of PRO labeling claims granted by FDA and EMA (www.mapi-prolabels.org)
- Unique library on PROs & epidemiology
- Literature reviews in the fields of PROs & epidemiology

Dissemination

- Publication of the PRO Newsletter (www.pro-newsletter.com) and Pharmacoepidemiology and Risk Management Newsletter (www.prmnewsletter.org)
- International distribution of over 100 PRO instruments and user manuals

Argentina
Australia
Austria
Belarus
Belgium
Bangladesh
Bolivia
Bosnia
Brazil
Bulgaria
Canada
Chile
China
Colombia
Costa Rica
Croatia
Czech Republic
Cyprus
Dominican Republic
Denmark
Ecuador
Egypt
Estonia
France
Germany
Georgia
Greece
Guatemala
Honduras
Hong Kong
Hungary
Iceland
India
Indonesia
Iran
Israel
Italy
Japan
Jordan
Korea
Kuwait
Latvia

Lithuania
Lithuania
Macedonia
Malta
Malaysia
Mexico
Moldova
Morocco
Netherlands
New Zealand
Norway
Pakistan
Panama
Paraguay
Peru
Philippines
Poland
Portugal
Puerto Rico
Qatar
Romania
Russia
Saudi Arabia
Serbia
Singapore
Slovakia
Slovenia
South Africa
Spain
Sri Lanka
Sweden
Switzerland
Taiwan
Thailand
Tunisia
Turkey
Ukraine
United Arab Emirates
United Kingdom
USA
Uruguay
Uzbekistan
Venezuela
Vietnam

MAPI RESEARCH TRUST

www.mapi-trust.org / contact@mapi-trust.org
Tel. +33 (0)4 72 13 65 75
27 rue de la Vilette, 69003 Lyon, FRANCE

MAPI INSTITUTE

www.mapi-institute.com / contact@mapi-institute.com
Tel. +33 (0)4 72 13 66 67
27 rue de la Vilette, 69003 Lyon, FRANCE

Philadelphia Location

Tel. +1 215 568 0121
1818 Market Street, Suite 3406, Philadelphia, PA 19103 USA

Concurrent Symposia Sessions

Thursday, October 27, 4:00 pm – 5:30 pm

(1): Standardization of Health-Related Quality of Life Domains Captured in Oncology Research

Chair: Deborah Watkins Bruner, RN, PhD

Tower Court A

Presenters and Panelists:

Bryce Reeve, PhD, University of North Carolina at Chapel Hill, Chapel Hill, NC, United States

Lari Wenzel, PhD, University of California, Irvine, Irvine, CA, United States

Benjamin Movsas, MD, Chairman, Radiation Oncology, Henry Ford Health System, Detroit, MI, United States

Ronald Chen, MD MPH, University of North Carolina at Chapel Hill, Chapel Hill, NC, United States

Individual Abstracts:

(242) Recommended Core Set of Patient-Reported Health-Related Quality of Life (HRQOL) Domains in Cancer

Ethan Basch, Memorial Sloan-Kettering Cancer Center; Deborah W. Bruner, University of Pennsylvania School of Nursing; David Cella, Northwestern University; Cynthia Chauhan, Mayo Clinic Breast SPORE, NCISXQoL Steering Cmte; TBCRC; Andrea Denicoff, National Cancer Institute; Amylou C. Dueck, Mayo Clinic; Michael Fisch, The University of Texas MD Anderson Cancer Center; Jennifer Hayes, LeAnn Jensen, Joseph Kelaghan, Jean M. Lynn, Lori Minasian, National Cancer Institute

(244) Recommended Core Set of Patient-Reported Symptoms and Health-Related Quality of Life (HRQOL) Domains in Ovarian Cancer

David Cella, Northwestern University; Heidi Donovan, University of Pittsburgh; Kristine Donovan, Moffitt Cancer Center; Joan Walker, University of Oklahoma; Martha Gaines, University of Wisconsin; Vivian Von Gruenigen, Summa Health System; Richard Penson, Massachusetts General Hospital; Bryce Reeve, University of North Carolina; Deborah W. Bruner, University of Pennsylvania

(368) Recommended Core Set of Patient-Reported Health-Related Quality of Life (HRQOL) Domains in Head and Neck Cancer

Patrick Gavin, Patrick Gavin Consulting, LLC; Andy Trotti, H. Lee Moffitt Cancer Center & Research Institute; Barbara A. Murphy, Vanderbilt-Ingram Cancer Center; John Ridge, Co-Leader, Head and Neck Cancer Keystone Fox Chase Cancer Center; Bisham Chera, Bryce Reeve, University of North Carolina at Chapel Hill; Deborah W. Bruner, Abramson Cancer Center - University of Pennsylvania

(418) Recommended Core Set of Patient-Reported Health-Related Quality of Life (HRQOL) Domains in Prostate Cancer

Martin G. Sanda, Harvard Medical School; Himansu Lukka, McMaster University; Richard J. Vetter, Mayo Clinic; Howard M. Sandler, Department of Radiation Oncology, Cedars-Sinai Medical Center

(2): The NIH Toolbox for the Assessment of Neurological and Behavioral Function

Chair: Cindy Nowinski, MD, PhD

Tower Court B

Presenters and Panelists:

David Tulskey, PhD, University of Michigan, Ann Arbor, MI, United States

John M. Salsman, PhD, Research Assistant Professor, Northwestern University, Chicago, IL, United States

Cindy J. Nowinski, MD PhD, Northwestern University, Feinberg School of Medicine, Chicago, IL, United States

Richard Gershon, PhD, Vice Chair, Northwestern University Department of Medical Social Sciences, Chicago, IL, United States

Individual Abstracts:

(500) The NIH Toolbox for Neurological and Behavioral Functioning: Common Data Elements to Impact Outcomes Measurement in Research Settings

(510) Emotional Health and its Assessment within the NIH Toolbox

(502) Measures of Cognitive, Motor and Sensory Health from the NIH Toolbox for Neurological and Behavioral Function

(506) The NIH Toolbox - Implications for Quality of Life Research

(3): New Developments in Response Shift Research: Theoretical, Philosophical, Methodological, and Clinical Paths

Chair: Carolyn Schwartz, ScD

Tower Court C

Presenters and Panelists:

Neil Aaronson, PhD, The Netherlands Cancer Institute, Amsterdam, The Netherlands

Leah M. McClimans, University of South Carolina, Department of Philosophy, Columbia, SC, United States

Lena Ring, PhD, Medical Products Agency (MPA) and Uppsala University, Uppsala, Sweden

Colleen McCarthy, MD MS, Memorial Sloan Kettering Cancer Center, New York, NY, United States

Individual Abstracts:

(137) Response shift revisited: A nomological network disentangled

Mirjam AG Sprangers, Academic Medical Centre, University of Amsterdam, The Netherlands; Alex Michalos, UNBC and Brandon University, Canada; Frans J. Oort, University of Amsterdam, The Netherlands; Bruce Rapkin, Albert Einstein College of Medicine, United States; Sara Ahmed, McGill University, Montreal, Canada; Ruth Barclay-Goddard, University of Manitoba, Winnipeg, Canada; David Eton, Mayo Clinic, United States, Sandra Nolte, Association of Dermatologic Prevention, Buxtehude, Germany; Margaret Nosek, Baylor College of Medicine, Houston, TX, United States; Lena Ring, Medical Products Agency (MPA) and Uppsala University, Uppsala, Sweden

Concurrent Symposia Sessions

Thursday, October 27, 4:00 pm – 5:30 pm, *continued*

(142) Philosophical perspectives on response shift: What causes it and how does it affect quality of life measurement?

Leah McClimans, University of South Carolina & University of Warwick; David Wasserman, Yeshiva University, New York, NY, United States; Angela Carlson, Providence College, Providence, RI, United States; Jerome Bickenbach, Queens University; Marjan Westerman, VU University, Amsterdam, The Netherlands; Alex Michalos, UNBC and Brandon University, Brandon, BC, Canada; Brian Quaranto, Delta-Quest Foundation, United States; Mirjam AG Sprangers, University of Amsterdam, The Netherlands

(148) Pharmaceutical development and response shift: Guidelines for response shift research in regulatory-driven clinical trials

Lena Ring, Medical Products Agency (MPA) and Uppsala University, Uppsala, Sweden; Michael Brundage, Queen's University, Kingston, ON, Canada; David Eton, Mayo Clinic, Rochester, MN, United States; Joel Finkelstein, Sunnybrook Health Sciences Centre, Toronto, ON, Canada; Bryce Reeve, University of North Carolina at Chapel Hill, Chapel Hill, NC, United States; Mirjam AG Sprangers, Academic Medical Centre, University of Amsterdam, The Netherlands

(151) From the Drawing Board to the Clinic: Clinical Applications of Response Shift

Colleen McCarthy, Memorial Sloan-Kettering Cancer Center, New York, NY, United States; Michael Brundage, Queen's University, Kingston, ON, Canada; Joel Finkelstein, Sunnybrook Health Sciences Centre, Toronto, ON, Canada; Bradley Morgenstern, Albert Einstein College of Medicine, Bronx, NY, United States; Frans J. Oort, University of Amsterdam, Amsterdam, The Netherlands; Andrea Pusik, Memorial Sloan Kettering Cancer Center, New York, NY, Theovan Rijn

Saturday, October 29, 2:30 pm – 4:15 pm

(4): Tricks of the Trade: Advice for Investigators in QOL Research

Chair: Roxanne Jensen, PhD
Tower Court A

Presenters and Panelists:

Neil Aaronson, PhD, The Netherlands Cancer Institute, Amsterdam, The Netherlands

Madeleine King, PhD, Psycho-oncology Cooperative Research Group (PoCoG), Sydney, Australia

Cindy LK Lam, MD, The University of Hong Kong, Hong Kong SAR

Albert Wu, MD MPH, Johns Hopkins Bloomberg School of Public Health, Baltimore, MD, United States

(5): Evaluation of Dimensionality and Model Fitting for IRT Analysis

Chair: Dennis Revicki, PhD
Tower Court B

Presenters and Panelists:

Seung W. Choi, PhD, Northwestern University, Chicago, IL, United States

Ron D. Hays, MA, PhD, Senior Health Scientist, RAND, Santa Monica, CA, United States

Wen-Hung Chen, PhD, United BioSource Corporation, Bethesda, MD, United States

Individual Abstracts:

(466) Multidimensional Hierarchical Computerized Adaptive Testing: Deriving Reliable Sub-dimension Scores under Hierarchical Models

(457) Evaluating English Versus Spanish Language Equivalence in the Patient-Reported Outcomes Measurement Information System Physical Functioning Item Bank

(138) Evaluation and Implications of Multidimensionality on IRT Analysis of a Pain Behavior Item Bank

(6): How Can Methodological Innovation Occur in Health-Related Quality-of-Life Research?

Chair: Carol M. Moinpour, PhD
Tower Court C

Presenters and Panelists:

Ivan Barofsky, PhD, The Quality of Life Institute, United States

Pennifer Erickson, PhD, The On-Line Guide to Quality-of-Life Assessment (OLGA), State College, PA United States

David Feeny, PhD, Kaiser Permanente Northwest Region, Portland, OR, United States

Carol M. Moinpour, PhD, Fred Hutchinson Cancer Research Center, Seattle, WA, United States

Poster Sessions

Thursday, October 27

Meet the Authors Sessions, 10:30 am - 11:00 am

Grand Ballroom 1

Cancer

(1001/83) A Comparative Assessment of Quality of Life Impact of Surgery and Postoperative Radiotherapy Versus Chemo-Radiotherapy in Head and Neck Cancer Patient (CP)
Subhas Pandit, B.P. Koirala Memorial Cancer Hospital, Bharatpur, Nepal; Suman Bhasker, B.K. Mohanti, Atul Sharma, Alok Thakar, AIIMS, New Delhi, India

(1002/153) Quality of Life Outcomes for Four Approaches to Prostatectomy (CP)
Suzanne M. Zavodni, Donald Strassberg, University of Utah, Salt Lake City, UT, United States; Christopher Dechet, Huntsman Cancer Institute, Salt Lake City, UT, United States

(1003/179) Quality of Life as a Dose-Limiting Factor in Cancer Prevention: The Case of Tamoxifen (CP)
Carolyn Gotay, Julia Dunn, University of British Columbia, School of Population & Public Health, Vancouver, BC, Canada

(1004/201) The Long-Term Health-Related Quality of Life of Glioma Patients: An Observational Study (CP)
Neil Aaronson, Department of Psychosocial Research, The Netherlands Cancer Institute, Amsterdam, The Netherlands; Martin J.B. Taphoorn, Jan J. Heimans, Tjeerd J. Postma, Department of Neurology, VU University Medical Center, Amsterdam, The Netherlands; Chad M. Gundy, Department of Psychosocial Research, NCI, Amsterdam, The Netherlands; Guus N. Beute, St. Elizabeth Hospital Tilburg, Tilburg, The Netherlands; Ben J. Slotman, Department of Radiotherapy, VU University Medical Center, Amsterdam, The Netherlands; Martin Klein, Department of Medical Psychology, VU University Medical Center, Amsterdam, The Netherlands

(1005/205) Development of Scales to Measure Transition Readiness in Childhood Cancer Survivors (MT)
Zahava Rosenberg-Yunger, Anne F. Klassen, Leila Amin, McMaster University, Hamilton, ON, Canada; Paul Nathan, The Hospital for Sick Children, Toronto, ON, Canada; Leeat Granek, McMaster University, Hamilton, ON, Canada; Norma D'Agostino, Princess Margaret Hospital, Toronto, ON, Canada; Katherine Boydell, Mark Greenberg, The Hospital for Sick Children, Toronto, ON, Canada; Ronald Barr, McMaster University, Hamilton, ON, Canada

(1006/209) Cancer Patients' Perception of Life Quality Domains in Clinical Practice (CP)
Mathilde Hedlund Lindberg, Uppsala University, Department of Pharmacy, Uppsala, Sweden; Lena Wettergren, Karolinska Institute, Stockholm, Sweden; Asa Kettis, Bengt Glimelius, Lena Ring, Uppsala University, Uppsala, Sweden

(1007/212) Long Term Impact on Quality of Life and Reintegration in Colorectal Cancer: A Population-Based Study (PP)

Agnès Caravati Jouvenceaux, University of Franche-Comté, Department of Biostatistics, Besançon, France; Guy Launoy, Calvados Digestive Cancer Registry, University Hospital, Caen, France; Delphine Klein, Department of Epidemiology and Public Health, Bas-Rhin Cancer Registry, University of Strasbourg, Strasbourg, France; Michel Henry-Amar, Cancer Registry François Baclesse Comprehensive Cancer Center, Caen, France; Edwige Abeillard, Calvados Digestive Cancer Registry, University Hospital, Caen, France; Arlette Danzon Doubs, Cancer Registry, University of Franche-Comté, Besançon, France; Astrid Pozet, Cancer Clinical Research Unit, University Hospital Jean Minjot, Besançon, France; Michel Velten, Paul Strauss Comprehensive Cancer Center, Strasbourg, France; Mariette Mercier, Department of Biostatistics, University of Franche-Comté, Besançon, France

(1008/278) Validity of the Functional Assessment of Cancer Therapy - Hepatobiliary (FACT-Hep) Questionnaire for Assessing Disease-Related Quality of Life (HRQoL) in Patients with Metastatic Pancreatic Cancer (FR)
David Cella, Zeeshan Butt, Northwestern University, Feinberg School of Medicine, Chicago, IL, United States; Hedy L. Kindler, University of Chicago Medical Center, Chicago, IL, United States; Charles S. Fuchs, Harvard Medical School, Cambridge, MA, United States; Sarah Bray, Amgen Ltd, Cambridge, United Kingdom; Arie Barlev, Alan Oglesby, Amgen Inc, Thousand Oaks, CA, United States

(1009/291) Quality of life (QOL) in Patients Who Present With Malignant Melanoma Undergoing SLN Biopsy (CP)
Brent B. Diekmann, Barbara Pockaj, Paul J. Novotny, Jeff A. Sloan, Mayo Clinic-Rochester, Rochester, MN, United States

(1010/300) Symptom Burden and HRQoL During Adjuvant Cancer Chemotherapy: A Longitudinal Study (CP)
Juan J. Dapuerto, María del Carmen Abreu, Carla Francolino, Dept. of Medical Psychology, Facultad de Medicina, Universidad de la República, Montevideo, Uruguay

(1011/316) Quality of Life Specific to Elderly Cancer Patients: Comparing Responses of Younger and Older Cancer Patients to a Measure for Elderly Cancer Patients (ELD15) (PP)
Anne-Sophie Darlington, Colin D. Johnson, Deborah Fitzsimmons, University of Southampton School of Medicine, Southampton General Hospital, University Surgical Unit, Southampton, United Kingdom

(1012/323) Added Prognostic Benefit of Various Patient-Reported Outcomes for Predicting Overall Survival in Patients with Advanced Stage Non-small Cell Lung Cancer (MT)
Bradley J. Barney, Kennesaw State University, Kennesaw, Georgia, United States; Tito R. Mendoza, Charles S. Cleeland, Valen E. Johnson, Gary M. Mobley, Charles Lu, Xin Shelley Wang, The University of Texas, M. D. Anderson Cancer Center, Houston, TX, United States

Track Sessions: (CP) Clinical Practice (FR) Frontiers of Quality of Life Research (MT) Methods and Theory (PP) Populations and Policy (Poster Number/Abstract Number)  = Poster Award

Poster Sessions

Thursday, October 27, *continued*

(1013/361) Systematic Review on the Methodological Quality of 20 Years of Research into Health Related Quality of Life (HRQL) after Curative Treatment (MT)

Marc Jacobs, Amsterdam Medical Center, Amsterdam, The Netherlands; Rhiannon C. Macefield, Jane M. Blazeby, School of Social & Community Medicine, University of Bristol, Bristol, United Kingdom; Ida J. Korfage, School of Social & Community Medicine, University of Bristol and Department of Public Health, Erasmus MC, University Medical Center Rotterdam, Rotterdam, The Netherlands; Mark Ivan, Berge Henegouwen, Ellen M. Smets, Inge Henselmans, Hanneke J.C.M. de Haes, Mirjam A.G. Sprangers, Amsterdam Medical Center, Amsterdam, The Netherlands

🏆 (1014/366) Patient-Reported Outcomes and Adherence to Long Term Therapy with Imatinib in Patients with Chronic Myeloid Leukemia. (FR)

Francesco Cottone, Health Outcomes Research Unit, GIMEMA Data Center, Rome, Italy; Michele Baccarani, University of Bologna, Bologna, Italy; Massimo Breccia, Giuliana Alimena, University of Rome La Sapienza, Department of Cellular Biotechnologies and Hematology, Rome, Italy; Gianantonio Rosti, Castagnetti Fausto, University of Bologna, Bologna, Italy; Marco Vignetti, Franco Mandelli, Fabio Efficace, Health Outcomes Research Unit, GIMEMA Data Center, Rome, Italy

🏆 (1015/405) Desire for Prognostic Information and Quality of Life Outcomes in Patients With High-Risk Myelodysplastic Syndromes. (FR)

Fabio Efficace, Health Outcomes Research Unit, GIMEMA Data Center, Rome, Italy; Gianluca Gaidano, Division of Hematology, Amedeo Avogadro University of Eastern Piedmont, Novara, Italy; Massimo Breccia, University of Rome, La Sapienza, Department of Cellular Biotechnologies and Hematology, Rome Italy; Giovanni Caocci, Hospital Binaghi Department of Hematology, Cagliari, Italy; Maria T. Voso, University of Rome "Cattolica S. Cuore", Department of Hematology, Rome, Italy; Mirjam Sprangers, Academic Medical Center, University of Amsterdam, Amsterdam, The Netherlands; Marianna Criscuolo, University of Rome "Cattolica S. Cuore", Department of Hematology, Rome, Italy; Monia Lunghi, Division of Hematology, Amedeo Avogadro University of Eastern Piedmont, Novara, Italy; Anna AD i Tucci, Hospital "Businco", Department of Hematology, Cagliari, Italy; Odile Beyne-Rauzy, Purpan Hospital, Internal Medicine Department, Toulouse, France; Francesco Buccisano, University of Tor Vergata, Department of Hematology, Rome, Italy; Barbara Deschler, University of Freiburg Medical Center, Department of Hematology, Freiburg, Germany; Uwe Platzbecker, University of Dresden "Carl Gustav Carus", Department of Hematology, Dresden, Germany

(1016/416) Clinician-Clinician Agreement in Common Terminology Criteria for Adverse Events in Cancer Patients: A Graded Response Model Approach (MT)

Yuelin Li, Thomas Atkinson, Raymond Baser, Ethan Basch, Memorial Sloan-Kettering Cancer Center, New York, NY, United States

CAT IRT DIF

(1017/141) Validity of a Computerized Adaptive Test for Role Functioning (RF-CAT) (MT)

Milena Anatchkova, John E. Ware Jr., University of Massachusetts Medical School, Worcester, MA, United States; Matthias Rose, Department of Psychosomatic Medicine, University Medical Center, Hamburg-Eppendorf, and Schön-Klinik Hamburg Eilbek, Germany; Jakob B. Bjorner, National Research Centre for the Working Environment, Copenhagen, Denmark

🏆 (1018/224) PRO-Measure: Moving Toward Standardized Electronic Representations of PRO (FR)

Dershung Yang, Bright Outcome, Buffalo Grove, IL, United States; Michael A. Kallen, Univ. of Texas MD Anderson Cancer Center, Houston, TX, United States; Niina Haas, Bright Outcome, Buffalo Grove, IL, United States

🏆 (1019/240) Evaluating the Impact of Method of Administration on Item Response: Results from the PROMIS Initiative (MT)

Barbara Gandek, Department of Quantitative Health Sciences, University of Massachusetts Medical School, Worcester, MA, United States; Matthias Rose, Department of Psychosomatic Medicine, University Medical Center, Hamburg-Eppendorf, and Schön-Klinik Hamburg Eilbek, Germany; Arthur A. Stone, Doerte U. Junghaenel, Department of Psychiatry, Stony Brook University, Stony Brook, NY, United States; John E. Ware, Jr., Department of Quantitative Health Sciences, University of Massachusetts Medical School, Worcester, MA, United States

(1020/411) Using the ICF to Examine the Content Coverage and Clinical Utility of the PROMIS Pain Interference Scale (CP)

Karl Bagrath, Jenny Strong, The University of Queensland, Brisbane, Australia

(1021/453) Taking a Modern Psychometric Approach to Assess Stability: Perceived Cognitive Questionnaire for Multiple Sclerosis (CP)

Shang YuanTeng, Lois Finch, Lisa Koski, Susan Bartlett, Nancy Mayo, McGill University, Montreal, QC, Canada

Clinical Practice

(1022/135) Self-Concordance Buffers the Negative Impact of High Job Demands on State Happiness Among Secondary School Teachers: A Quantitative Diary Study (MT)

Maja Tadic, Institute of Social Sciences Ivo Pilar, Marulicev, Croatia; Arnold B. Bakker, Wido Oerlemans, Erasmus University Rotterdam, Rotterdam, The Netherlands

(1023/200) Spiritual Aspect of Quality of Life in Cancer Patients Treated with Palliative Pelvic Radiation: A Pilot-Study (MT)

Gudrun Rohde, University of Agder, Kristiansand, Norway; Marte G.G. Cameron, Christian Kersten, Renevan Helvoirt Center for Cancer Treatment, SÅrlandet Hospital, Kristiansand, Norway; Ingvild Vistad, Department of Gynaecology, SÅrlandet Hospital, Kristiansand, Norway

Track Sessions: (CP) Clinical Practice (FR) Frontiers of Quality of Life Research (MT) Methods and Theory (PP) Populations and Policy (Poster Number/Abstract Number) 🏆 = Poster Award

Poster Sessions

Thursday, October 27, *continued*

(1024/204) Patients, Physicians and Observer Rated Communication Quality: Different Perspectives on Routine Oncology Consultations (CP)

Hanna Fagerlind, Ida Bergstrom, Uppsala University, Department of Pharmacy, Uppsala, Sweden; Åsa Kettis, Department of Pharmacy and Quality and Evaluation Unit, Uppsala University, Uppsala, Sweden; Bengt Glimelius, Department of Radiology, Oncology and Radiation Science, Uppsala University, Uppsala, Sweden; Lena Ring, Department of Pharmacy, Uppsala University and Astrazeneca R&D, Södertälje, Sweden

(1025/228) Coping Mechanisms Versus Health-Related Quality of Life (HRQoL) among Methadone Maintenance Treatment (MMT) Patients (CP)

Pei Lin Lua, Universiti Sultan Zainal Abidin (UniSZA), Kuala Terengganu, Malaysia; Nor Samira Talib, Centre for Clinical & Quality of Life Studies (CCQoLS), Kuala Terengganu, Malaysia

(1026/253) Current Issues in QOL Assessments of Dendritic Cell Therapy: A Literature Review (FR)

Kikuko Miyazaki, School of Public Health, Kyoto University, Dept of Health Informatics, Kyoto, Japan; Emi Saito, Kanae Shimamura, Naoko Ino, TakefumiIshidao, Tella, Inc., Tokyo, Japan; Takeo Nakayama, Kyoto University, School of Public Health, Kyoto, Japan

(1027/261) Training Oncologists in the use of Patient Reported Outcome Data in Clinical Practice: The Development of a Facilitation Aid (CP)

Galina Velikova, Elena Takeuchi, Kate Absolom, Rob Lane, Julie Symons, Julia M.B. Brown, University of Leeds, Leeds, United Kingdom

(1028/285) TCMs for Assessing the Outcomes of Syndrome of Intermingled Phlegm and Blood Stasis in Stable Angina: A Clinical Survey Study (MT)

Zhang Zhe, University of Traditional Chinese Medicine, Affiliated Hospital of Liaoning, Shenyang, China; Yang Guan-lin, Yu Chang-lin, Wang Hong-lin, Liaoning University of Traditional Chinese Medicine, Shenyang, China; Zhang Hui-yong, University of Traditional Chinese Medicine, Affiliated Hospital of Liaoning, Shenyang, China

(1029/289) Patient Reported Outcome (PRO) Instruments in Chronic Lymphocytic Leukemia (MT)

John Lu, Outcomes Insight, United States; Jyotsna Mehta, Medimmune, Gaithersburg, MD, United States

(1030/310) Patient Reported Outcomes in Oncology Daily Practice: A QoL Report for Clinical Decision (CP)

Alexandra Oliveira, Pedro L Ferreira, Francisco L. Pimentel, Centre for Health Studies, Coimbra, Health Sciences, University of Aveiro, Portugal

(1031/355) HIV-Related Quality of Life (CP)

Pedro L. Ferreira, University of Coimbra, Centre for Health Studies & Research, Coimbra, Portugal; Jorge M. Catarino, Lisbon, Portugal

(1032/394) Assessment of Cancer Survivors Willingness to Communicate Health-related Quality of Life Problems With their Doctors (CP)

Roxanne E. Jensen, Nadiyah Sulayman, Lombardi Comprehensive Cancer Center, Washington, DC, United States; Ann S. Hamilton, Keck School of Medicine, Los Angeles, CA, United States; Arnold L. Potosky, Lombardi Comprehensive Cancer Center, Washington, DC, United States; Neeraj K. Arora, National Cancer Institute, Bethesda, MD, United States

(1033/401) The QOL and SOC of Health Promotion (CP)

Michiko Kobayashi, Kwassui Women's College, Nagasaki, Japan; Ki-yoko Hayasegawa, Masako Kawasaki, Nagasaki National Health Insurance Organizations, Nagasaki, Japan; Takashi Mandai, (NCVC), Japanese Society of Quality of Life Research, Kobe, Japan

(1034/507) Evaluation of Quality of Work Life According to the Level of Care in Primary Health Care Workers (CP)

Raquel Gonzalez-Baltaz, Gustavo Hidalgo-Santacruz, Silvia G. Leon-Cortes, José G. Salazar-Estrada, Maria G. Aldrete-Rodriguez, Universidad de Guadalajara, Guadalajara, Mexico

HEALTH UTILITIES INDEX® (HUI®)

a leading multi-domain instrument for
PROs - RCTs - QALYs - CEAs - CUAs
and much more...



HUI useful for ...

- reliable, valid, and responsive measurement of health status and health-related quality of life (HRQL)
- development and marketing of pharmaceuticals, medical devices, health-care products & services
- regulatory agency approval and formulary listing applications
- product labeling claims

HUI provides ...

- interpretable, single- and multi-domain (vision, hearing, speech, ambulation, dexterity, emotion, cognition, pain & discomfort) utility scores as recommended by the US Panel, NICE, CADTH, and Australia's Department of Health & Ageing

HUI in ...

- dozens of languages, multiple recall periods
- self- and proxy-assessment formats
- self-complete and interview formats

HUI has ...

- population norm statistics for demographic groups
- utility scoring formulas based on preferences of various communities

HUI used in ...

- 100s of clinical, cost-utility and population studies since 1990

www.healthutilities.com

huinfo@healthutilities.com

Phone: (905) 929-HUI2

huinquiry@healthutilities.com

Fax: (905) 627-7914

Track Sessions: (CP) Clinical Practice (FR) Frontiers of Quality of Life Research (MT) Methods and Theory (PP) Populations and Policy
(Poster Number/Abstract Number) 🏆 = Poster Award

Poster Sessions

Thursday, October 27, *continued*

Disparities

(1035/158) Development and Validation of a Lower Extremity Lymphedema Screening Questionnaire (CP)

Kathleen Yost, Andrea L. Cheville, Mariam L. Al Hilli, Amy L. Weaver, Andrea Mariani, Sean C. Dowdy, Mayo Clinic, Rochester, MN, United States

(1036/210) Quality of Life, Hopelessness and Life Satisfaction in Transgendered People (A study from South India) (PP)

Selwyn Stanley, University of Plymouth, Plymouth, United Kingdom; Velliah Sethuramalingam, Bharathioasan University, Dept. of Social Work, Tiruchirappalli, Tamil Nadu, India

(1037/435) Mortality and Self-Rated Health of US Adults Deaf Since Birth or Early Childhood: Findings From National Data (PP)

Steven Barnett, Paul C. Winters, University of Rochester, Family Medicine Research Programs, Rochester, NY, United States

(1038/521) (MT) The Grounded Item Technique for Generating Content Valid Questions (MT)

San Keller, Roger E. Levine, American Institutes for Research, Chapel Hill, NC, United States

Internet

(1039/160) Feasibility and Value of PatientViewpoint: A Web System for Patient-Reported Outcomes (PRO) Assessment in Clinical Practice (FR)

Claire Snyder, Johns Hopkins School of Medicine, Baltimore, MD, United States; Amanda Blackford, Antonio Wolff, Michael Carducci, Joseph Herman, Sidney Kimmel Comprehensive Cancer Center at Johns Hopkins, Baltimore, MD, United States; Albert Wu, Johns Hopkins Bloomberg School of Public Health, Baltimore, MD, United States; PatientViewpoint Scientific Advisory Board

(1040/248) The Norwegian Study in Renewing Health: Stimulating Self-Management in Patients With Type 2 Diabetes Mellitus Through Telecare With the Few Touch Application (FTA) and Health Counselling - a Randomized Controlled Trial. (CP)

Elisabeth Ribu, Astrid Torbjomsen, Heidi Holmen, Oslo University College, Oslo, Norway; Eirik Arsand, Norwegian Centre for Integrated Care and Telemedicine, Tromsø, Norway; Astrid Wahl, Oslo University, Oslo, Norway

(1041/279) The Effectiveness Of An Innovative Web-based Application To Monitor Health Related Quality Of Life Problems In Paediatric Rheumatology Clinical Practice (CP)

Lotte Haverman, Marion van Rossum, Hugo Heymans, Taco Kuijpers, Martha Grootenhuis, Emma Children's Hospital - Academic Medical Centre, Amsterdam, The Netherlands

(1042/304) Cancer-Related Fatigue Symptom Assessment in Clinical Practice (CP)

Niina M. Haas, BrightOutcome, Buffalo Grove, IL, United States; Michael A. Kallen, Carmen P. Escalante, University of Texas MD Anderson Cancer Center, Houston, TX, United States

(1043/420) Quality of Life of People With Multiple Sclerosis Living in Care Homes: Development of a New Measurement Tool (PP)

Afsane Riazi, Trefor Aspden, Siobhan Bradshaw, Department of Psychology, Royal Holloway, University of London, Surrey, United Kingdom; Diane Playford, Brain Repair and Rehabilitation, Institute of Neurology, London, United Kingdom

(1044/438) Methodological Guidelines for Conducting Internet-based Outcomes Research: A New Frontier in Qualitative Research (MT)

Emuella Flood, Shadi Gholizadeh, Kathleen M. Beusterien, Sarah Tsay, Jean-Ezra Yeung, Oxford Outcomes Inc., an ICON Plc Company, Bethesda, United States

Lung Disorders

(1045/114) Assessing Quality of Care in Lung Transplant Patients (CP)

Maria-Jose Santana, University of Calgary, Calgary, Canada; David Feeny, Kaiser Permanente, Portland, OR, United States; Dale C. Lien, University of Alberta, Edmonton, AB, Canada

(1046/322) Cross-Cultural Adaptation and Validation of the Portuguese Version of the Living with Asthma Questionnaire (LWAQ) (MT)

Rui S. Gonçalves, Luãs M. Cavalheiro, João N. Gil, CEISUC, Coimbra, Portugal; Abel L. Rodrigues, António P. Coutinho, Gonçalo A, Henriques, Polytechnic Institute of Castelo Branco, Castelo Branco, Portugal; Pedro L. Ferreira, CEISUC, Coimbra, Portugal

Qualitative Research

(1047/219) Content Validation of PROMIS I Depression Items in the Context of Clinical Care for Adults Living with HIV (CP)

Todd Edwards, Anne M. Skalicky, Rob J. Fredericksen, University of Washington, Seattle, WA, United States; Erika L. Austin, University of Alabama, Birmingham, Birmingham, AL, United States; Heidi M. Crane, Paul K. Crane, Donald L. Patrick, University of Washington, Seattle, WA, United States

(1048/280) Development and Validation of the TCM-SAQ: A Syndrome-specific Instruction to Assess QoL for Angina Treated by Traditional Chinese Medicine (CP)

Zhang Huiyong, Yang Guanlin, Liaoning University of Traditional Chinese Medicine, Shenyang, Peoples Republic of China; Zhang Zhe, Yu Li, Yang Yongju, University of Traditional Chinese Medicine, Affiliated Hospital of Liaoning, Shenyang, Peoples Republic of China; Liu Lixing, Yu Changhe, Liaoning University of Traditional Chinese Medicine, Shenyang, Peoples Republic of China; Du Rui, Wang Xiayun, Chen Yan, University of Traditional Chinese Medicine, Affiliated Hospital of Liaoning, Shenyang, Peoples Republic of China; Ma Yuan, Liaoning University of Traditional Chinese Medicine, Shenyang, Peoples Republic of China

Track Sessions: (CP) Clinical Practice (FR) Frontiers of Quality of Life Research (MT) Methods and Theory (PP) Populations and Policy (Poster Number/Abstract Number)  = Poster Award

Poster Sessions

Thursday, October 27, *continued*

 (1049/376) **Fit For Purpose, Rigorous Methodology For Qualitative Research Supporting Patient Reported Outcome (PRO) Selection and Development: The Way Forward (MT)**

Cicely Kerr, Annabel Nixon, Sarah Acaster, Oxford Outcomes Ltd, an ICON Plc Company, Oxford, United Kingdom; Emuella Flood, Oxford Outcomes Ltd, an ICON Plc Company, Bethesda, MD, United States

(1050/384) **Assessing The Comprehensibility and Content Validity of the OASES-A in Adults Who Stutter (CP)**

Richard E. White, Philip Buck, Teva Neuroscience, PA, United States; Marci Clark, Carla DeMuro, RTI Health Solutions, Ann Arbor, MI, United States; Jane Castelli-Haley, Teva Neuroscience, PA, United States; J. Scott Yaruss, University of Pittsburgh, Pittsburgh, PA, United States

(1051/419) **The Impact of Chronic Constipation (CC) on Children and Adolescents: Results from Qualitative Research (FR)**

Rob Arbuckle, Linda Abetz, Mapi Values Ltd, Bollington, Cheshire, United Kingdom; Robyn T. Carson, Harborside Financial Center, Jersey City, NJ, United States; Mollie J. Baird, Ironwood Pharmaceuticals, Cambridge, MA, United States; Steven J. Shiff, Jeffrey M. Johnston, Nicola Bonner, Mapi Values Ltd, Bollington, Cheshire, United Kingdom

(1052/462) **Knowledge, Belief, and Content Validity of Measures of Treatment Satisfaction (MT)**

Dennis D. Gagnon, Thomson Reuters, Santa Barbara, CA, United States

(1053/513) **Quality of Life in Women's Nursing New University Students (FR)**

Ai Hatanaka, Kana Takesue, Michiko Kobayashi, Kwassui Women's University Omura, Nagasaki, Japan

(1054/117) **Family Quality of Life Perceptions of Mothers Who Have Children with Disabilities in Turkey (MT)**

Bekir Fatih Meral, Sakarya University, Sakarya, Turkey; Atilla Cavkaytar, Anadolu University, Eskisehir, Turkey

Friday, October 28

Meet the Authors Sessions, 9:45 am - 10:30 am

Grand Ballroom 1

Caregiving

(2001/230) **Temple Based Psychiatric Intervention in Schizophrenia: Quality of Life & Family Burden in Caregivers (A Pre-Post Intervention Analysis from India) (CP)**

Selwyn Stanley, University of Plymouth, United Kingdom; Shwetha Sundar, Holy Cross College, Nagercoil, India

(2002/236) **Quality of Life in Caregivers Who Take Care of Demented Family Patients (CP)**

Takashi Mandai, Shoudou Hirano, Yousuke Nishioka, Shinji Tagami, Toshihiro Saito, Yu Kataoka, Toru Sumiyoshi, Mitsuhiro Masuda, Wataru Sato, Ichiro Nagano, Kunio Nakayama, Kanehisa Morimoto, Rika Hayashida, Japanese Society of Quality of Life Research, Kobe, Japan

(2003/335) **Understanding The Health Impact of Caregiving: A Qualitative Study of Canadian Parents of Children With Cancer (MT)**

Anne Klassen, Sonia Gulati, Zahava Rosenberg-Yunger, Leelat Granek, Lisa Watt, McMaster University, Hamilton, ON, Canada; David Dix, University of British Columbia, Vancouver, BC, Canada; Robert Klaassen, Children's Hospital of Eastern Ontario, Ottawa, ON, Canada; Lillian Sung, The Hospital for Sick Children, Toronto, ON, Canada; John Cairney, McMaster University, Hamilton, ON, Canada; Nicola Shaw, Algoma University, Sault Ste. Marie, ON, Canada

(2004/348) **Disease-Specific Quality of Life Instruments for Caregivers of Children With Paediatric Illness: A Systematic Review (FR)**

Maria Yui Kwan Chow, National Centre for Immunisation Research and Surveillance (NCIRS), The Children's Hospital at Westmead, Sydney, Australia; Angela Morrow, The Children's Hospital at Westmead, Sydney, Australia; Spring C. Cooper-Robbins, Discipline of Paediatrics and Child Health, The University of Sydney, Sydney, Australia; Julie Leask, National Centre for Immunisation Research and Surveillance (NCIRS), The Children's Hospital at Westmead Sydney, Sydney, Australia

Lung Disorders

(2005/67) **Relationship Between Cognitive Function and Quality of Life in Asthma (CP)**

Liljana Danojevic, Health Care Centre, Grocka, Serbia; Zeljka D. Bozalo, Home for Children "Spomenak" Pancevo, Pancevo, Serbia; Srdjan R. Dimitrijevic, Actavis D.O.O. Company Belgrade, New Belgrade, Serbia; Valentina T. Ljubic Beganovic Health Care Centre Grocka, Serbia

(2006/196) **Quantitative and Qualitative Analysis of Health Related Quality of Life in Patients with Pulmonary Arterial Hypertension (CP)**

Naoko Kobayashi, Keio University Hospital, Japan; Yuichi Tamura Keio, University Hospital, Tokyo, Japan; Masako Takeda, Keio University Hospital, Tokyo, Japan; Kazuyo Yasuda, Keio University Hospital, Japan; Hiromi Kurihara, Keio University Hospital, Japan; Rie Satoh, Keio University Hospital, Japan; Yuka Aihara, Keio University Hospital, Japan; Rei Kayama, Keio University Hospital, Japan; Teruno Murata, Keio University Hospital, Japan; Toru Satoh, Kyorin University Hospital, Japan; Keiichi Fukuda, Kyorin University Hospital, Tokyo, Japan

(2007/440) **An Assessment of the Effects of Iyengar Yoga on the Health-related Quality of Life of Patients with Chronic Respiratory Diseases: A Pilot Study (CP)**

Maria-Jose Santana, University of Calgary, Canada; Martha A. Loadman, University of Alberta Hospital, Canada; Judi Mirus, Julia M. Santana-Parrilla, University of Alberta, Canada; David Feeny, Kaiser Permanente, Dale C. Lien, University of Alberta, Canada

Track Sessions: (CP) Clinical Practice (FR) Frontiers of Quality of Life Research (MT) Methods and Theory (PP) Populations and Policy (Poster Number/Abstract Number)  = Poster Award

Poster Sessions

Friday, October 28, *continued*

(2008/491) Factors Associated with Health Related Quality of Life of Patients with Chronic Obstructive Pulmonary Disease (CP)

Miako Kimura, School of Nursing, University of Sao Paulo, Sao Paulo, Brazil; Rafael Stelmach, School of Medicine, University of Sao Paulo, Sao Paulo, Brazil

Psychometrics

(2009/70) The Meaning of the Single Item “Health Status” Rating (MT)

Thomas Perneger, Geneva University Hospitals, Geneva, Switzerland

(2010/80) An Assessment of Health Related Quality of Life in African American Bisexual and Gay Men from a National US Sample (FR)

Rose Ayikukwei, Joshua Rosenberger, Indiana University, Bloomington, IN, United States

(2011/101) An Analysis of Daily, Weekly and Monthly Variations in Health-Related Quality of Life (FR)

Jacek A. Kopec, Eric Sayre, Jolanda Cibere, Carlo A. Marra, Jennifer Davis, John M. Esdaile, University of British Columbia and Arthritis Research Centre, Vancouver, Canada

(2012/184) Measurement Properties of the Flu-like Symptom Index of the HPSS-D (MT)

Susan Mathias, Health Outcomes Solutions, Tiburon, CA, United States; Ross D. Crosby, Neuropsychiatric Research Institute, Fargo, ND, United States; Martha S. Bayliss, Quality Metric Inc., Lincoln, RI, United States; Elizabeth Tschosik, Health Outcomes Solutions, Winter Park, FL, United States; Sandhya Sapra, Bristol-Myers, Squibb Princeton, NJ, United States

(2013/185) Psychometric Properties of the Functional Assessment of Chronic Illness Therapy -Treatment Satisfaction Patient Satisfaction (FACT-TS-PS) Survey in the Assessment of Cancer Care Satisfaction (ACCESS) Study. (MT)

Justin Y. Lo, Matthew Walsh, Amy Trentham-Dietz, University of Wisconsin – Madison, Madison, WI, United States

(2014/221) Content Assessment of the Facial Line Outcomes (FLO-11) Questionnaire (MT)

Kristina Fitzgerald, Andrew Yaworsky, Mapi Values, Boston, MA, United States; Selena Daniels, Allergan, Irvine, CA, United States; Nina Galipeau, Allison Kornstein, Chris Evans, Mapi Values, Boston, MA, United States; Somali Misra-Burgess, Allergan, Irvine, CA, United States

(2015/223) Reliability and Validity of Pain, Fatigue, Depression, and Social Roles Participation PRO Measures in Populations of Individuals Aging With a Disability (MT)

Alyssa Bamer, Karon Cook, Dagmar Amtmann, University of Washington, Seattle, WA, United States

(2016/264) Estimating the Minimally Important Difference (MID) of the Diabetes Health Profile- 18 (DHP-18) for Type 1 and Type 2 Diabetes Mellitus (MT)

Brendan Mulhern

Keith Meadows, DHP Research & Consultancy Limited, London, United Kingdom

(2017/283) TCMsys (Traditional Chinese Medical SYndrome Scale): Development and Evaluation of a Doctor-Administrated Disease-Syndrome Scale for Assessing the Outcomes of Phlegm and Blood Stasis Syndrome of Stable Angina (CP)

Yu Chang-lin, Yang Guan-lin, Wang Hong-lin, Liaoning University of Traditional Chinese Medicine, Shenyang, China; Zhang Hui-yong, Zhang Zhe, University of Traditional Chinese Medicine, Affiliated Hospital of Liaoning, Shenyang, China

(2018/284) Missing Mechanism and Imputation for Missing Data in Developing the Traditional Chinese Medicine Syndrome of Angina Questionnaire (TCM-SAQ) (MT)

Yang Guan-lin, Liaoning University of Traditional Chinese Medicine, Shenyang, China; Yu Li, Zhang Zhe, University of Traditional Chinese Medicine, Affiliated Hospital of Liaoning, Shenyang, China; Liu Lixing, Yu Changhe, Liaoning University of Traditional Chinese Medicine, Shenyang, China; Chen Yan, University of Traditional Chinese Medicine, Affiliated Hospital of Liaoning, Shenyang, China

🏆 (2019/327) Validity of 1-month Recall for Components of Sexual Function (MT)

Kevin Weinfurt, Li Lin, Carrie Dombeck, Kathryn Flynn, Duke Clinical Research Institute, Durham, NC, United States; Joan Broderick, Stony Brook University; Maria Fawzy, Duke University Medical Center; Denise Snyder, Megan Williams, Duke University School of Nursing

🏆 (2020/380) Confirmation of Minimally Important Differences For Six PROMIS-Cancer Scales and Five Computer Adaptive Tests (MT)

Kathleen Yost, Mayo Clinic, Rochester, MN, United States; Jennifer L. Beaumont, Northwestern University Feinberg School of Medicine, Chicago, IL, United States; David T. Eton, Mayo Clinic, Rochester, MN, United States; Sofia F. Garcia, Northwestern University Feinberg School of Medicine, Chicago, IL, United States; David Cella, Northwestern University Feinberg School of Medicine, Chicago, IL, United States

(2021/404) The Case For a HRQL Core Outcome Set: Outcome Reporting Bias in Oesophageal Cancer Studies (FR)

Rhiannon Macefield, University of Bristol, Bristol, United Kingdom; Marc Jacobs, Amsterdam Medical Center University of Amsterdam, Amsterdam, The Netherlands; Natalie S. Blencowe, University of Bristol, Bristol, United Kingdom; Ida J. Korfage, Erasmus MC University Medical Center Rotterdam, Rotterdam, The Netherlands; Joanna Nicklin, University of Bristol, Bristol, United Kingdom; Sara T. Brookes, University of Bristol, Bristol, United Kingdom; Mirjam, A. G. Sprangers, Academic Medical Center University of Amsterdam, Amsterdam, The Netherlands; Jane M. Blazeby, University of Bristol, Bristol, United Kingdom

Track Sessions: (CP) Clinical Practice (FR) Frontiers of Quality of Life Research (MT) Methods and Theory (PP) Populations and Policy (Poster Number/Abstract Number) 🏆 = Poster Award

Poster Sessions

Friday, October 28, *continued*

(2022/406) Dichotomization of Quality of Life Scales - Does the Choice of the Cut-Off Level Affect the Size of the Observed Effects? (MT)

Georg Kemmler, Innsbruck Medical University, Innsbruck, Tyrol, Austria; Johannes Giesinger, Innsbruck Medical University, Department of Psychiatry, Innsbruck, Tyrol, Austria; Bernhard Holzner, Innsbruck Medical University, Department of Psychiatry, Innsbruck, Tyrol, Austria

(2023/437) Identifying Domains of Patient-Centred Care in Order to Develop and Validate a Patient Reported Outcome Measure (PROM) for People With Long-Term Conditions (MT)

Monica Hadi, Elizabeth Gibbons, Louise Locock, Raymond Fitzpatrick, Sara Ryan, University of Oxford, Oxford, United Kingdom

(2024/448) Quality of Life in the Care Home: A Systematic Review of Existing Instruments (MT)

Trefor Aspden, University of London, Egham, Surrey, United Kingdom; Siobhan Bradshaw, Department of Psychology, Royal Holloway, University of London Surrey, United Kingdom; Diane Playford, Brain Repair and Rehabilitation, Institute of Neurology, London, United Kingdom; Afsane Riazi, Department of Psychology, Royal Holloway, University of London, Surrey, United Kingdom

(2025/489) Initial Psychometric Properties of the Disabkids-Cystic Fibrosis Module to Measure the Health-Related Quality of Life for Brazilian Children and Adolescents (MT)

Danielle Maria Dos Santos, University of Sao Paulo, Piracicaba -Sao Paulo, Brazil; Keila C. Deon, University of São Paulos Ribeirão, Preto, Brazil; Claudia Fegadolli, Universidade Federal de São Paulo, Piracicaba, Brazil; Roberta A. Reis, Universidade Federal do Rio Grande do Sul Porto, Alegre, Brazil; Monika Bullinger, Universitätsklinikum Hamburg-Eppendorf, Hamburg, Germany; Claudia B. Santos, Universidade de São Paulo, Brazil

(2058/518) Quality of Life after Brain Injury (QOLIBRI) - Scale metrics, validity and correlates of quality of life

Nicole Von Steinbuechel, Department of Medical Psychology and Medical Sociology, Goettingen, Germany; Klaus von Wild, Department of Neurosurgery and Early Neurotraumatological Rehabilitation, Clemens Hospital, Westfalian Wilhelms University of Muenster, Germany; Henning Gibbons, Department of Medical Psychology and Medical Sociology, Georg August University Goettingen, Germany; Monika Bullinger, Department of Medical Psychology, University Hospital Eppendorf, Hamburg, Germany; Andrew Maas, Department of Neurosurgery, University Hospital Antwerp, Belgium; Eddy Neugebauer, IFOM, Private University of Witten/Herdecke, Koeln, Germany; Jane Powell, Goldsmiths College, Department of Psychology, London, United Kingdom; George Zitnay, Association Martha Jefferson Hospital, Virginia, United States; Jean-Luc Truelle, Service de Médecine physique et adaptation, C.H.U. Raymond-Poincaré, Garches, France

Scale Development

(2026/87) Development and Validation of an Adaptive Behavior Index for Women with Pelvic Floor Disorders (CP)

John Wei, University of Michigan, Ann Arbor, MI, United States

(2027/168) Validation and Reliability of a Disease-Specific Quality of Life Measure (the TranQoL) in Adults with Thalassemia Major. (CP)

Robert Klaassen, Children's Hospital of Eastern Ontario, Ottawa, ON, Canada; Elliott Vichinsky, Children's Hospital Oakland, Oakland, CA, United States; Melanie Kirby, Hospital for Sick Children, Toronto, ON, Canada; Ellis Neufeld, Children's Hospital Boston, Boston, MA, United States; Janet Kwiatkowski, Children's Hospital of Philadelphia, Philadelphia, PA, United States; John Wu, British Columbia Children's Hospital, Vancouver, BC, Canada; Linda Vickars, St. Paul's Hospital, Vancouver, BC, Canada; Nicholas Barrowman, Children's Hospital of Eastern Ontario Research Institute, Ottawa, ON, Canada; Manuela Merelles-Pulcini, Hospital for Sick Children, Toronto, ON, Canada; Robert Yamashita, California State University, Long Beach, CA, United States; Durhane Wong-Rieger, Anemia Institute for Research and Education, Toronto, ON, Canada; Nancy L. Young, Laurentian University, Sudbury, ON, Canada; Nancy Sweeters, Children's Hospital of Oakland, Oakland, CA, United States

(2028/194) Individual Medication-Related Quality of Life (FR)

Phantipa Sakhong, Faculty of Pharmaceutical Sci, Chulalongkorn University, Bangkok, Thailand; Rungpetch Sakulbumrungsil, Faculty of Pharmaceutical Sciences, Chulalongkorn University, Bangkok, Thailand

(2029/222) Retrospective Change Can Supplement Measured Change at the Ceiling (MT)

Norma Terrin, Angie Mae Rodday, Susan K Parsons, Tufts Medical Center, Boston, MA, United

(2030/262) Update of the Patient-Reported Outcome and Quality of Life Instruments Database (PROQOLID) using the FDA guidance on PRO measures (MT)

Katrin Conway, Martine Caron, Laure-Lou Perrier, Virginie Vaisier, Isabelle Savre, Catherine Acquadro, MAPI Research Trust, Lyon, France

🏆 (2031/263) Quality and Acceptability of Patient Reported Outcome Measures (PROMs) Used in Chronic Fatigue Syndrome / Myalgic Encephalomyelitis (CFS/ME): A Systematic Review (MT)

Kristie Haywood, Royal College of Nursing Research Institute, University of Warwick, Coventry, United Kingdom; Sophie Staniszevska, Royal College of Nursing Research Institute, Coventry, United Kingdom

(2032/358) Patients Evaluation of Hospital Treatment: A Structured Review (MT)

Michele Peters, Helen Lloyd, Crispin Jenkinson, Ray Fitzpatrick, University of Oxford, Oxford, United Kingdom

Track Sessions: (CP) Clinical Practice (FR) Frontiers of Quality of Life Research (MT) Methods and Theory (PP) Populations and Policy (Poster Number/Abstract Number) 🏆 = Poster Award

Poster Sessions

Friday, October 28, *continued*

(2033/362) Relationship Between Cognitive Patient Reported Outcome Assessment and Neurocognitive Testing (MT)

Lisa Palladini, Nancy E. Mayo, Division of Clinical Epidemiology, Montreal, QC, Canada; Lesley Fellows McGill, Montreal Neurological Institute, Montreal, QC, Canada

(2034/427) Psychometric Properties of a New Measure of Quality of Life for Patients With Mucopolysaccharidosis (MPS) the Brazilian MPS-QOL: Preliminary Results of the Pilot Stage (MT)

Michele R. Oliveira, Neusa Rocha, Marcelo Rocha-Garcia, Universidade Federal do Rio Grande do Sul, Porto Alegre, Brazil; Marcia Ribeiro, Universidade Federal do Rio de Janeiro, Rio de Janeiro, Brazil; Haber Maia, Universidade Federal Fluminense, Rio de Janeiro, Brazil; Angelina Acosta, Universidade Federal da Bahia, Salvador, Brazil; Ida V. Schwartz, Universidade Federal do Rio Grande do Sul, Porto Alegre, Brazil

🏆 (2035/468) The BODY-Q: A New Patient-Reported Outcome (PRO) Measure for Body Contouring Patients (CP)

Amie Scott, Memorial Sloan-Kettering Cancer Center, New York, NY, United States; Andrea L. Pusic, Memorial Sloan-Kettering Cancer Center, New York, NY, United States; Stefan J. Cano, Plymouth College of Medicine and Dentistry, Plymouth, United Kingdom; Jessica Johnson, McMaster University, Hamilton, ON, Canada; Jessica L. Lawson, Memorial Sloan-Kettering Cancer Center, New York, NY, United States; Petra Wildgoose, McMaster University, Hamilton, ON, Canada; Peter G. Cordeiro, Memorial Sloan-Kettering Cancer Center, New York, NY, United States; Anne F. Klassen, McMaster University, Hamilton, ON, Canada

(2036/501) Critical Evaluation of the Psychometric Properties of the Female Sexual Functioning Index (FSFI) (MT)

Thomas Atkinson, Shari Goldfarb, Shari Damast, Antonia Bennett, Laura Sit, Raymond Baser, Ethan Basch, Memorial Sloan-Kettering, New York, NY, United States

Theory

(2037/129) Health-related Quality of Life Versus Needs Assessment: Do Conceptual Distinctions Translate Empirically? (MT)

Madeleine King, Psycho-oncology Cooperative Research Group (Po-CoG), Sydney, Australia; Ben Colagiuri, School of Psychology, Sydney, Australia; Phyllis Butow, PoCoG and Centre for Medical Psychology and Evidence-based Decision-making (CeMPED), Sydney, Australia; Joshua McGrane, Pearson Psychometric Laboratory, Perth, Australia; Timothy Luckett, South Western Sydney Clinical School, Sydney, Australia; Melanie Price, PoCoG and CeMPED, Sydney, Australia; Damian Birney, Australian School of Business, Sydney, Australia; Australian Ovarian Cancer Study (AOCS) Group and AOCS QoL Study Group, Department of Gynaecological Oncology, Westmead Hospital and Westmead Institute for Cancer Research, University of Sydney at the Westmead Millennium Institute, Westmead, NSW, Australia

(2038/180) Conceptual Model of the Impact of Tibia Fracture on Patients' Lives (FR)

Cicely Kerr, Katy Gallop, Annabel Nixon, Oxford Outcomes Ltd, an ICON Plc Company, Oxford, United Kingdom; Evgeniya Antonova, MedImmune; April Naegeli, Eli Lilly and Company, Indianapolis, IN, United States

(2039/250) Validation of the Traditional Chinese Medicine "Not-yet-ill" Physiological Constitution Concept by Health-related Quality of Life (CP)

Cindy LK Lam, Wendy Wong, The University of Hong Kong, Hong Kong, SAR, Peoples Republic of China; Vivian T.W. Wong, The Hospital Authority, HK, Hong Kong, SAR, Peoples Republic of China; Zhi-min Yang, Guangzhou, Peoples Republic of China

We don't just speak your language,
We speak the world's languages.

Scaling to meet your clinical trial translation needs

Lionbridge
LIFE SCIENCES

Expert Language Translation. Global Success.

Visit us at www.lionbridgelifesciences.com

Track Sessions: (CP) Clinical Practice (FR) Frontiers of Quality of Life Research (MT) Methods and Theory (PP) Populations and Policy (Poster Number/Abstract Number) 🏆 = Poster Award

Poster Sessions

Friday, October 28, *continued*

(2040/460) Symptom Clusters in Individuals With Multiple Sclerosis

Shahnaz Shahrbanian, Nancy E Mayo, McGill University, Montreal, QC, Canada; Pierre Duquette, Centre hospitalier de Lâ Universitâ de Montrâel, Montreal, QC, Canada; Ayse Kuspinar, McGill University, Montreal, QC, Canada; Shang Yuan Teng, McGill University, Montreal, QC, Canada

(2041/492) World Health Organization's (WHO's) International Classification of Functioning, Disability and Health (ICF): Conceptual Framework and Opportunities for Measurement (FR)

Carole Tucker

(2042/517) Mental Health and Quality of Work Life in Health Care Providers (FR)

Gustavo Hidalgo-Santacruz, Raquel Gonzâlez-Baltazar, Silvia G. Leân-Cortâs, Josê G. Salazar-Estrada, Mónica I. Contreras-Estrada, Universidad de Guadalajara, Guadalajara, Jalisco, Mexico

Translation and Cultural Adaptation

(2043/164) Pooling of Cross-Cultural PRO Data in Multinational Clinic Trials: How Much Can Poor Measurement Affect Statistical Power (MT)

Antoine Regnault, Mapi Values, Lyon, France; Jean-François, Hamel Universitâ de Nantes, Nantes, France; Donald L. Patrick, Seattle Quality of Life Group\Center for Disability Policy and Research, University of Washington, Seattle, WA, United States

(2044/178) A Cross-Cultural Study of the Scale Labels in the EQ-5D-3L and EQ-5D-5L Descriptive Systems (MT)

Nan Luo, National University of Singapore, Singapore; Minghui Li, China Pharmaceutical University, Nanjing, Peoples Republic of China; Julie Chevalier, Institut Gustave Roussy, Villejuif, France; Andrew Lloyd, Oxford Outcomes Ltd, Oxford, United Kingdom; Michael Herdman, Insight Consulting & Research, Matarâ, Spain

(2045/258) Life Expectancy of a Translation: The example of the French Version of the Clinical Dementia Rating (CDR) Scale (MT)

Axelle Nadjar, Katrin Conway, Catherine Acquadro, MAPI Research Trust, Lyon, France; Nathalie Fernandez, MAPI Institute, Lyon, France

(2046/273) Translation of the National Institutes of Health Stroke Scale (NIHSS) List of Sentences: A Challenging Task (MT)

Caroline Anfray, Frédérique Boucher, MAPI Institute, Lyon, France; Carol Cooke, Pfizer, Sandwich, France; Patrick Lyden, Cedars-Sinai Medical Center, Los Angeles, CA, United States; Catherine Acquadro, Katrin Conway, MAPI Research Trust, Lyon, France

(2047/321) Measuring Health-Related Quality of Life in Patients With Hip Osteoarthritis and Total Hip Replacement: Adaption and Validation of the Hip Disability and Osteoarthritis Outcome Source LK 2.0 (HOOS 2.0) to the Portuguese Culture (MT)

Luis Cavalheiro, João N. Gil, Sandra Nunes, Pedro L. Ferreira, Rui S. Gonçalves, CEISUC, Coimbra, Portugal

(2048/324) Predictor of Health Status in Patients with Stroke Referred for Physical Therapy (MT)

Rui Gonçalves, CEISUC, Coimbra, Portugal; Rui J. Costa, University of Aveiro, Aveiro, Portugal; Manuel Verâssimo, University of Coimbra, Coimbra, Portugal; João N. Gil, Luâs M. Cavalheiro, Pedro L. Ferreira, CEISUC, Coimbra, Portugal

(2049/334) Application of the "Bother" Concept Across Cultures (MT)

Barbara Brandt, Mary C. Gawlicki, Corporate Translations, Inc., East Hartford, CT, United States; Shawn McKown, Corporate Translations, Inc., Chicago, IL, United States

(2050/354) Quality of Life in Patients with Psoriasis - Creation of the Portuguese Version of the Psoriasis Disability Index (MT)

Pedro L. Ferreira, CEISUC, Coimbra, Portugal; Bâbara C. Fernandes, IPO-Centro, Portugal

Utilities

(2052/182) Is a QALY Still a QALY at the End of Life? (MT)

Jeff Round, University College London, London, United Kingdom

(2053/186) Differences in Valuation of EQ-5D Health States Between Time Trade-Off and Self-Assessment (MT)

Justin Lo, Mari Palta, David J. Vanness, University of Wisconsin-Madison, Madison, WI, United States

(2054/203) The Adolescent Perspective of the Impact of Weight Status on Quality of Life (MT)

Yemi Otuboyede, Chris McCabe, Andrew Hill, Academic Unit of Health Economics, University of Leeds, Leeds, United Kingdom; Aki Tsuchiya, School of Health and Related Research, University of Sheffield, Sheffield, United Kingdom; Claire Hulme, Academic Unit of Health Economics, University of Leeds, Leeds, United Kingdom

(2055/314) Validity of the McSad to Describe Depression Among Patients With Physical Diseases for Use in Utility Evaluation (MT)

Katerina Papgeorgiou, Karin M. Vermeulen, Maya J. Schroevers, Erik Buskens, Adelita V. Ranchor, University Medical Center Groningen, Groningen, The Netherlands

(2056/347) Comparison Between Visual, Numerical and Facial Scales, in Pain Assessment Rating of Juvenile Idiopathic Arthritis Patients According to Age Group (CP)

Tania Maria Mendonca, Universidade Federal de Uberlandia, Uberlandia, Brazil; Claudio Arnaldo Len, IV, Maria Tereza RA Terreri, IV, Universidade Federal de Sao Paulo, Sao Paulo, Brazil; Carlos Henrique Martins Silva, IV, Universidade Federal de Uberlandia, Uberlandia, Brazil; Rogerio MC Pinto, IV, Universidade Federal de Uberlandia, Uberlandia, Brazil

🏆 (2057/504) Factors that Influence the Distributional Characteristics of EQ-5D Health State Preferences: An Application of Quantile Regression (MT)

James W. Shaw, Abbott Laboratories, Westmont, IL, United States

Track Sessions: (CP) Clinical Practice (FR) Frontiers of Quality of Life Research (MT) Methods and Theory (PP) Populations and Policy (Poster Number/Abstract Number) 🏆 = Poster Award

Poster Sessions

Saturday, October 29

Meet the Authors Sessions, 10:30 am - 11:30 am

Grand Ballroom 1

Breast Cancer

(3001/191) The Effect of Laughter Therapy on Depression, Anxiety, and Stress in Patients with Breast Cancer Undergoing Radiotherapy (CP)

SoHee Kim, YeanHee Kim, HwaJung Kim, Soon-Haeng Lee, Si On Yu, Asan Medical Center, Seoul, South Korea

(3002/341) Contextual Health Related Quality of Life and Rural Breast Cancer Survivorship (FR)

Leli Pedro, Terry Schumaker, Allison Proto, Michelle Hansen, University of Colorado Denver College of Nursing, Aurora, CO, United States

(3003/381) Contralateral Prophylactic Mastectomy: Long-Term Consistency of Satisfaction and Adverse Effects and the Significance of Informed Decision-Making, Quality of Life, and Personality Traits (CP)

Marlene Frost, Tanya L. Hoskins, Lynn C. Hartmann, Amy C. Degnim, Joanne L. Johnson, Judy C. Boughey, Mayo Clinic, Rochester, MN, United States

Chronic Illness

(3004/76) Somatic and Psychological Complaints and Quality of Life in Japanese Outpatients (CP)

Tomoaki Kimura, MOA Takanawa Clinic, Tokyo, Japan; Hiroshi Matsuo Aiwakai, Tatekawa Clinic, Suita, Japan; Naoharu Iida Zuisenkai, MOA Sapporo Clinic, Sapporo, Japan; Yoshiteru Maki Korinkai, Kagoshima Clinic, Kagoshima, Japan; Kazuo Nitta Gyokusenkai MOA Takanawa Clinic, Tokyo, Japan; Seiya Uchida, Yasutami Tsuda, Hiroyuki Sakaguchi, MOA Health Science Foundation, Atami, Japan; Kiyoshi Yamaoka, Kiyoshi Suzuki, Gyokusenkai MOA Takanawa Clinic, Tokyo, Japan

(3005/234) Health-Related Quality of Life (HRQoL) and Medication Adherence Among People with Epilepsy: A Baseline Analysis (CP)

Pei Lin Lua, Neni Widiastromoselamat, Universiti Sultan Zainal Abidin (UNISZA), Kuala Terengganu, Malaysia

Join UBC's International Team

UBC is experiencing strong demand for its services and the individuals who join us will have significant opportunity to shape the growth of our international organization. We are currently looking for experienced professionals for our growing Health Outcomes organization. We have a number of scientific openings in the U.S. and London.

Key Scientific Openings:

- Senior Research Leader
- Research Scientist
- Senior Research Associate
- Research Associates, Levels I-III
- Research Assistant

For more information and consideration, please visit our website at unitedbiosource.com/careers.

US +1 866 458 1096
EU +44 (0) 20 8834 0100
unitedbiosource.com


United BioSource Corporation
Evidence Matters®

Track Sessions: (CP) Clinical Practice (FR) Frontiers of Quality of Life Research (MT) Methods and Theory (PP) Populations and Policy (Poster Number/Abstract Number)  = Poster Award

Poster Sessions

Saturday, October 29, *continued*

(3006/281) Examining the Relationship Between Changes in PRO Measures of Chronic Constipation Symptoms and the PAC-QOL: Results From Two Phase 3 Trials of Linaclotide (MT)

Lauren Nelson, Theresa Gilligan, Valerie S. L. Williams, Sheri Fehnel, RTI Health Solutions, Research Triangle Park, NC, United States; Robyn T. Carson, Forest Research Institute, Jersey City, NJ, United States; Mollie Baird, Jeffrey M. Johnston, Ironwood Pharmaceuticals, Cambridge, MA, United States

(3007/294) A Systematic Review of Burden of Treatment Instruments in Three Chronic Diseases (MT)

David Eton, Rebecca J. Mullan, Kathleen J. Yost, Jason Egginton, Jennifer Ridgeway, Hannah E. Fields, Mayo Clinic, Rochester, MN, United States; Muhammad Mustafa, Kingdom Hospital, Riyadh, Saudi Arabia; Krista Schmit, Avera Research Institute, Sioux Falls, SD, United States; Patricia J. Erwin, Hassan Murad, Victor M. Montori, Mayo Clinic, Rochester, MN, United States

(3008/375) Psychological Adjustment Modify Association Between Task Performance and Quality of Life in People With Low Vision (CP)

Yoshimi Suzukamo, Mineko Ono, Shin-Ichi Izumi, Tohoku University, Sendai, Japan; Mariko Yamamura, Takako Yokoyama, Chie Sotozono, Kyoto Prefectural University, Kyoto, Japan; Ikumi Takatsu, Tohoku University Hospital, Japan; Shinshi Chin, Aasahigaoka Eye Clinic, Japan; Naoko Yoshimura, Yoshitaka Yamagata, Yamagata Eye Clinic, Japan; Sanae Asonuma, Osaka University, Japan; Kimie Asano, Handa Eye Clinic, Noburo Ando, Saiseikai Niigata Daini Hospital, Japan

(3009/433) Can HRQoL Outcomes Predict Compliance With Treatment in Patients With Chronic Kidney Disease? (CP)

Nadine Aawar, Sam Salek, Steve Riley, Richard Moore, Cardiff University, Cardiff, United Kingdom

(3010/473) The Physical Function Index does not Represent Physical Function in People with Disability (MT)

Ana Maria Rodriguez, Susara Van der Spuy, Santley Hum, Christiane Lourenzo, Susan Scott, Lois Finch, Bruno Gagnon, Nancy Mayo, McGill University, Montreal, QC, Canada

(3011/497) Predictors of Long-Term Quality of Life in Cardiac Surgery Patients (CP)

Lisa Martin, Sari D. Holmes, Linda L. Henry, Lori E. Stone, Chidima T. Martin, Cshantara Woolfolk, Amber Frazier, Niv Ad, Inova Heart & Vascular Institute, Falls Church, VA, United States

Diabetes

(3012/131) Health Related Quality of Life of Persons With Diabetes in Pakistan (FR)

Karim Moosa Ali, National Commission for Human Development, Karachi, Pakistan

(3013/388) Safety, Health and Quality of Life in Personal and Organizational Level in the Manufacturing Industry (PP)

Jose Guadalupe Salazar Estrada, Raquel González Baltazar, Norma Silvia Figueroa Villase, Universidad de Guadalajara, Guadalajara, Mexico

(3014/424) Comparing and Adapting Same-Language Versions of Patient Reported Outcome Measures (PROMs) (PP)

Annarita Felici, Health Psychology Research Ltd, Egham, United Kingdom; Clare Bradley, Royal Holloway, University of London, Egham, United Kingdom

Geriatrics

(3015/155) Development of a Health-Related Quality of Life Scale for Patients with Dysphagia (CP)

Markiko Naito, Nagoya University Graduate School of Medicine, Nagoya, Japan; Yoshimi Suzukamo, Tohoku University Graduate School of Medicine, Sendai, Japan; Wataru Fujii Fujita, Health University Nanakuri Sanatorium, Tsu, Japan; Hiroshi Seta, Tohoku University Graduate School of Medicine, Sendai, Japan

(3016/161) Measuring Health-Related Quality Life in Long-term Care Residents after Hip Fracture (CP)

Allyson Jones, Lauren Beaupre, Sumit Majumdar, University of Alberta, Edmonton, AB, Canada

(3017/188) A Primer for Systematic Reviewers and Others on the Measurement of Health-Related Quality of Life in Older Adults (CP)

David Feeny, The Center for Health Research, Kaiser Permanente Northwest Region, Portland, OR, United States; Elizabeth N. Eckstrom, Oregon Health & Science University, Portland, OR, United States; Evelyn P. Whitlock, Leslie A. Perdue, Center for Health Research, Portland, OR, United States

(3018/251) More General Than Specific? Measuring and Valuing Quality of Life Older People Receiving Post-Acute Rehabilitation and Transition Care (CP)

Leah Couzner, Julie Ratcliffe, Maria Crotty, Flinders University, Adelaide, Australia

(3019/276) The Influence of Social Support on Participation in Everyday Activities Among Older Adults with Chronic Health Conditions (PP)

Carri Hand, Mary Law, McMaster University, Hamilton, ON, Canada; Mary Ann McColl, Queen's University, Kingston, ON, Canada; Steven Hanna, Susan J. Elliott, McMaster University, Hamilton, ON, Canada

(3020/390) How Physically Active are Persons With Parkinson Disease? (CP)

Allyson Jones, John Baser, University of Alberta, Edmonton, AB, Canada; David Feeny, Kaiser Permanente Northwest Region, Portland, OR, United States

(3021/408) Elderly Capabilities and Quality of Life in Prevention and Care of Disease: First Results (MT)

Riaan Botes, Rijks University, University of Groningen, Groningen, The Netherlands; Karin Vermeulen, Adelita Ranchor, Erik Buskens, University Medical Center Groningen, Groningen, The Netherlands

Track Sessions: (CP) Clinical Practice (FR) Frontiers of Quality of Life Research (MT) Methods and Theory (PP) Populations and Policy (Poster Number/Abstract Number)  = Poster Award

Poster Sessions

Saturday, October 29, *continued*

(3022/443) Attitudes to Ageing - Does Gender Make a Difference? (FR)

Gail Low, Anita E. Molzahn, Faculty of Nursing, University of Alberta, Edmonton, AB, Canada; Mary Kalfoss, Department of Research, Diakonova University College, Oslo, Norway

(3023/465) Optimising Mapping of Disease-Specific Patient-Reported Outcomes on Utility Like Scores in Audiology. (MT)

Jochen Nicolai, University of Cardiff, Cardiff, United Kingdom; Manfred Ehling, Hochschule Fresenius University, Idstein, Germany

Obesity

(3024/167) Factors Predicting Health Related Quality of Life in Patients With Morbid Obesity One Year After Attending a Learning Course (CP)

Randi Andenæs, Faculty of Health Sciences, Oslo and Akershus University College, Oslo, Norway; May Solveig Fagermoen, Department of Gastroenterology, Oslo University Hospital, Oslo, Norway; Hilde Eide, Faculty of Health Sciences, Buskerud University College, Drammen, Norway; Anners Lerdal, Oslo University Hospital & Lovisenberg Deaconal, UC, Oslo, Norway

(3025/193) Association of Anthropometric Measures With Short-Form 36 (SF-36) Physical and Mental Component Summary Scores in a Multiethnic Asian Population (CP)

Hwee-Lin Wee, Maudrene Tan, E. Shyong Tai, Jeannette Lee, Yong Loo Lin, National University of Singapore; Stefan Ma, Ministry of Health Singapore, Singapore, Derrick Heng, Julian Thumboo, Department of Rheumatology & Immunology, Singapore General Hospital, Singapore

(3026/202) A Review of QoL and HRQoL Instruments used in the Obese and Overweight Adolescent Population (MT)

Yemi Oluboyede, Chris McCabe, Andrew Hill, Academic Unit of Health Economics, University of Leeds, Leeds, United Kingdom; Aki Tsuchiya, School of Health and Related Research, University of Sheffield, Sheffield, United Kingdom; Claire Hulme, Academic Unit of Health Economics, University of Leeds, Leeds, United Kingdom

Pediatrics and Adolescents

(3027/159) Developing a Mental Health Quality of Life Instrument for Adolescents (FR)

Ligia M. Chavez, University of Puerto Rico, San Juan, Puerto Rico; Karen Mir, Behavioral Sciences Research Institute, San Juan, PR, Puerto Rico

(3028/165) BMI, Body Image and Health Related Quality of Life among Norwegian Children and Adolescents (CP)

Solvi Helseth, Oslo and Akershus University College, Oslo, Norway; Kristin Haraldstad, The University of Agder, Kristiansand, Norway; Knut A. Christophersen, The University of Oslo, Oslo, Norway

(3029/216) Measuring Child Health: How Do Measures Influence the Outcomes? (MT)

Anne Klassen, Leila Amin, Peter Rosenbaum, Carol DeMatteo, Ronald Barr, McMaster University, Hamilton, ON, Canada; Lillian Sung, The Hospital for Sick Children, Toronto, ON, Canada, Robert Klaassen, University of Ottawa, Ottawa, ON, Canada

🏆 (3030/260) Is it necessary to develop different Spanish versions of PRO measures? The case study of the PedsQL 4.0 Generic Core Scales (MT)

Caroline Anfray, Isabelle Mear, Katrin Conway, Catherine Acquadro, MAPI Research Trust, Lyon, France; James W. Varni, Department of Pediatrics, College of Medicine, College Station, TX, United States

(3031/305) New Quality Of Life (QOL) Questionnaire For Schoolchildren (CP)

Rika Hayashida, Siebold University of Nagasaki, Nagasaki, Japan; Yuki Matsubayashi, Nagasaki University Hospital, Nagasaki, Japan; Michiko Kobayashi, Kwassui Women's University, Omura, Nagasaki, Japan; Takashi Mandai, Japanese Society of Quality of Life Research, Kobe, Hyogo, Japan


(3032/320) Quality of Life in Mothers of Very-Low Birth Weight Preterms in a 12-Month Post-Partum Period (FR)

Nivea de Macedo Oliveira Morales, Magda Regina Moura, Carlos Henrique Martins Silva, Cristina Arantes Araújo, Helena Paro Rogário Pinto, Vânia Abdallah Celine Vieira, Universidade Federal de Uberlândia, Uberlândia, Brazil

TRANSLATION & FORMATTING SERVICES
Under the scientific direction of David Cella, Ph.D.

FACIT.org **FACITtrans**
PROVIDING A VOICE FOR PATIENTS WORLDWIDE

- Licensing of FACIT questionnaires
- PRO instrument developer services
- Biostatistical and psychometric consulting for clinical trials
- Translation and linguistic validation
- Item Bank & ePRO translation expertise
- Translatability review
- CRF design, formatting and proofreading


NORTHWESTERN UNIVERSITY
DEPARTMENT OF MEDICAL SOCIAL SCIENCES
www.FACIT.org
Contact Benjamin Arnold, M.A. • Phone: +1 224 521-0919 • barnold@facit.org

Track Sessions: (CP) Clinical Practice (FR) Frontiers of Quality of Life Research (MT) Methods and Theory (PP) Populations and Policy (Poster Number/Abstract Number) 🏆 = Poster Award

Poster Sessions

Saturday, October 29, *continued*

🏆 (3033/333) PedsQL Performance in the Pediatric Emergency Department: Can We use HRQOL for Acute Care Outcomes? (FR)

Martha Stevens, Keri R. Hainsworth, Steven J. Weisman, Peter M. Layde, Medical College of Wisconsin, Milwaukee, WI, United States

(3034/351) A Survey Measuring Quality of Life Impact on Parents of a Child's Influenza-Like-Illness: Qualitative Data (FR)

Angie Morrow, Kids Rehab, Children's Hospital at Westmead, Sydney, Australia; Maria Yui Kwan Chow, Julie Leask, Robert Booy, National Centre for Immunisation Research and Surveillance (NCIRS), The Children's Hospital at Westmead, Sydney, Australia

(3035/393) Minimal Important Difference in the HRQL Detected By Patients With Juvenile Idiopathic Arthritis After a Standard Physiotherapy Program (CP)

Tania Maria Mendonca, Universidade Federal de Uberlandia, Uberlandia, Brazil; Claudio Arnaldo Len, IV, Maria Tereza RATerreri, IV, Universidade Federal de Sao Paulo, Sao Paulo, Brazil; Carlos Henrique Martins Silva, Rogerio MC Pinto, IV, Universidade Federal de Uberlandia, Uberlandia, Brazil

(3036/414) Refinement and Validation of Teenager's Quality of Life Questionnaire (T-QoL) (MT)

Sam Salek, Cardiff University, Cardiff, United Kingdom; Mohammad KA Basra, University Hospital Wales, Cardiff, United Kingdom; Zahra Tanweer, D Fenech, A. Howe, Tina Mehbouba, Catherine Golics, Andrew Finlay, Cardiff University, Cardiff, United Kingdom

(3037/421) The Impact of Irritable Bowel Syndrome with Constipation (IBS-C) on Children and Adolescents: Results from Qualitative Research (FR)

Rob Arbuckle, Linda Abetz, Mapi Values Ltd, Bollington, Cheshire, United Kingdom; Robyn T. Carson, Harborside Financial Center, Jersey City, NJ, United States; Mollie J. Baird, Ironwood Pharmaceuticals, Cambridge, MA, United States; Steven J. Shiff, Jeffrey M. Johnston, Nicola Bonner, Mapi Values Ltd, Bollington, Cheshire, United Kingdom

🏆 (3038/425) Head-to-head Comparisons of Four Legacy Pediatric Health-Related Quality of Life Instruments: A Study on Parent Proxy-Report (MT)

Kelly Kenzik, I-Chan Huang, University of Florida, Gainesville, FL, United States; Sanjeev Tuli, John Nackashi, Department of Pediatrics, College of Medicine, University of Florida, Gainesville, FL, United States; Dennis Revicki, Center for Health Outcomes Research, United BioSource Corporation, Bethesda, MD, United States; Elizabeth Shenkman, Institute for Child Health Policy, College of Medicine, University of Florida, Gainesville, FL, United States

🏆 (3039/426) Sometimes at Pains to Say: Variation in Child and Youth Accounts of Chronic Pain and Emotional Distress across Age and Diagnostic Groups (FR)

Esi Morgan Dewitt, C. Jeffrey Jacobson, Jennifer Farrell, Susmita Kashikar-Zuck, Emily Verkamp, Michael Seid, Cincinnati Children's Hospital Medical Center, Cincinnati, OH, United States

🏆 (3040/430) Differential Item Functioning in Quality of Life Measure Between Children With and Without Special Health Care Needs: A Multiple Group-Multiple Indicator-Multiple Cause Methodology (MT)

I-Chan Huang, University of Florida, Gainesville, FL, United States; Dennis Revicki, Center for Health Outcomes Research, United BioSource Corporation, Bethesda, MD, United States; Elizabeth Shenkman, Institute for Child Health Policy, College of Medicine, University of Florida, Gainesville, FL, United States

(3041/442) Pain and Quality of Life Among Adolescents With Chronic Fatigue Syndrome (CFS) (CP)

Anette Winger, SÅ, lvi, Mirjam Ekstedt, Vegard Bruun Wyller, Oslo University Hospital, Oslo, Norway

(3042/450) Cross-Cultural Adaption of the Kidscreen-52 Questionnaire to Measure Health Related Quality of Life in the 8-18 Years Old Mexican Population (MT)

Carlos Hidalgo Rasmussen, University of Guadalajara, Jalisco, Mexico; Elizabeth Medina Castro, Universidad Michoacana de San Nicolás de Hidalgo, Morelia, Michoacán, Mexico; Luis Rajmil, Agency for Health Information, Assessment and Quality Health Services Research Unit IMIM-Hospital del Mar, Barcelona, Spain

(3043/463) Health Utilities Index-3 Among Injured Youth Residing in Agricultural Households: Regional Rural Injury Study-III (RRIS-III) (PP)

Colleen M. Renier, Essentia Institute of Rural Health, Duluth, MN, United States; Susan G. Gerberich, Patricia M. McGovern, Bruce H. Alexander, Timothy R. Church, Ann S. Masten, Andrew D. Ryan, Steven J. Mongin, University of Minnesota, Minneapolis, MN, United States

(3044/485) Translation and Semantic Validation for the Brazilian Culture of the Health-Related Quality of Life Questionnaire Disavkids- Cystic Fibrosis Module for Children and Adolescents. (MT)

Danielle Maria Dos Santos, Universidade Federal de São Paulo, Piracicaba -Sao Paulo, Brazil; Keila C. Deon, University of Sao Paulo, Ribeirão Preto -Sao Paulo, Brazil; Claudia Fegadolli, Universidade Federal de São Paulo, Piracicaba -Sao Paulo, Brazil; Roberta A. Reis, Universidade Federal do Rio Grande do Sul, Porto Alegre, Brazil; Monika Bullinger, Institute for Medical Psychology, Hamburg University, Hamburg, Germany; Claudia B. Santos, University of Sao Paulo, Ribeirão Preto -Sao Paulo, Brazil

Populations and Policy

(3046/176) Effects of Comorbidity on Quality of Life for Patients With Common Chronic Diseases in Community Health Service (PP)

Hongmei Wang, Kai-Ling Jin, Social Medicine and Family Medicine, Zhejiang University, Peoples Republic of China

Track Sessions: (CP) Clinical Practice (FR) Frontiers of Quality of Life Research (MT) Methods and Theory (PP) Populations and Policy (Poster Number/Abstract Number) 🏆 = Poster Award

Poster Sessions

Saturday, October 29, *continued*

🏆 (3047/286) The Relationship Between Changes in PRO Measures of IBS-C Symptoms and the IBS-QOL: Results From Two Phase 3 Trials of Linaclotide (MT)

Valerie S. L. Williams, Theresa Gilligan, Lauren Nelson, Sheri Fehnel, RTI Health Solutions, Research Triangle Park, NC, United States; Mollie Baird, Ironwood Pharmaceuticals, Cambridge, MA, United States; Robyn T. Carson, Forest Research Institute, Jersey City, NJ, United States; Jeffrey M. Johnston, Ironwood Pharmaceuticals, Cambridge, MA, United States

(3048/296) Ethnic Differences in Health-Related Quality of Life in Infants: The Generation R Study (PP)

Hein Raat, Ilse Flink, Henning Tiemeier, Henri Åsa A. Moll, Erasmus MC, Univ Medical Ctr Rotterdam, Rotterdam, The Netherlands, Jeanne M. Landgraf, HealthAct CHQ, Cambridge, MA, United States; Vincent W.V. Jaddoe, Albert Hofman, Tinneke M.J. Beirens, Dept. of Public Health, Erasmus MC, Univ Medical Ctr Rotterdam, Rotterdam, The Netherlands

(3049/299) Improving Rehabilitation Outcomes And Quality Of Life Using Therapy Courtyards In A Rehabilitation Hospital (PP)

Joan J. Branin, Center for Health & Aging, University of La Verne, La Verne, CA

(3050/302) Public Awareness of the Genetic Information Nondiscrimination Act (GINA) of 2008 (PP)

Ming-Yi Huang, Matthew Perri, III, University of Georgia, Athens, GA, United States

🏆 (3051/349) A Survey Measuring Quality of Life Impact on Parents of a Child's Influenza-Like-Illness (FR)

Maria Yui Kwan Chow, Julie Leask, Kevin J. Yin, National Centre for Immunisation Research and Surveillance (NCIRS), The Children's Hospital at Westmead, Sydney, Australia; Angela Morrow, Kids Rehab, The Children's Hospital at Westmead, Sydney, Australia; Robert Booy, National Centre for Immunisation Research and Surveillance (NCIRS), The Children's Hospital at Westmead, Sydney, Australia

(3052/357) RIMAS: A repository of Portuguese validated Patient Reported Outcomes (PRO) instruments (MT)

João Gil, Pedro L. Ferreira, Luis M. Cavalheiro, CEISUC, Coimbra, Portugal

(3053/359) The Burden of Rare Neurological Disease on Patient Quality of Life: Implications For Research and Policy (PP)

Melanie Calvert, Thomas Hoppitt, Hardev Pall, Benjamin Eaton, Cath Sackley, University of Birmingham, Birmingham, United Kingdom

(3054/370) Satisfaction With Life in Norway: Influences From Lifestyle, Life Events and Socioeconomic Factors (FR)

Jocelyne Clench-Aas, Ragnhild B. Nes, Odd S. Dalgard, Leif E. Aarå, Norwegian Institute of Public Health, Oslo, Norway

(3056/374) Study Endpoints: Patient-Reported Outcomes and Beyond (MT)

Drug Information Association (DIA) Study Endpoints Special Interest Area Community (SIAC), Horsham, PA, United States

(3057/383) Burden of Disease to Patients and Healthcare Systems in Friedreich's Ataxia (PP)

Sam Salek, Barbara Polek, Centre for Socioeconomic Research, Cardiff University, Cardiff, United Kingdom; Manfred Ehling, Population, Microcensus, Housing and Migration / Federal Statistical Office of Germany, Wiesbaden, Germany; M. J. Roach, William T. Andrews, Santhera Pharmaceuticals (USA), Inc., Charlestown, MA, United States

(3058/387) Modifying Effect of Gender and Eating Disorders on Adolescents Quality of Life/Anxiety/Depression Body Mass Index Relationship (PP)

Nelly Agrinier, Serge Briançon, Emilie Bonsergent, Nancy University, Vandoeuvre les Nancy, France; Laurent Muller, Elisabeth Spitz, Université Paul Verlaine- Metz, Metz, France

(3059/389) Epidemiological Study of Quality of Life in Osteopathy (ESoQoLiO) (CP)

Francesco Cerritelli, European Institute for Evidence Based Osteopathic Medicine, Pescara, Italy; Gina Barlafante, Accademia Italiana Osteopatia Tradizionale, Pescara, Italy; MarzoVerzella, Gianfranco Pizzolorusso, European Institute for Evidence Based Osteopathic Medicine, Pescara, Italy; Vincenzo, Cozzolino, Accademia Italiana Osteopatia Tradizionale, Pescara, Italy

Response Shift

(3060/288) Appraisal Processes in People Awaiting Spine Surgery: Investigating Quality of Life Using Mixed Methods (MT)

Joel Finkelstein, Sunnybrook Health Sciences Center, Toronto, ON, Canada; Michael A. Kallen, University of Texas, MD Anderson Cancer Center, Houston, TX, United States; Brian Quaranto, Delta Quest Foundation, North Tonawanda, NY, United States; Bruce A. Rapkin, Albert Einstein College of Medicine, Bronx, NY, United States; Carolyn E. Schwartz, DeltaQuest Fdn. & Tufts University School of Medicine, Concord, MA, United States

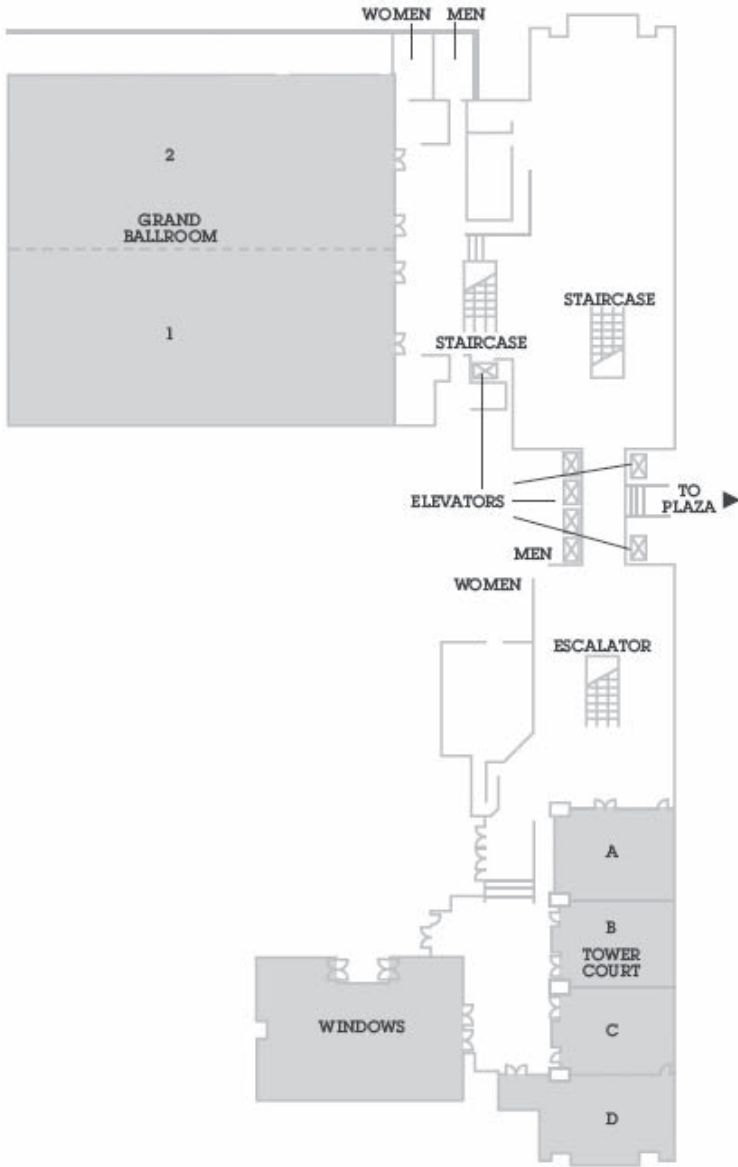
(3061/475) Depression Impacts Physical Functioning Differently for Men and Women: Is Response Shift Involved? (MT)

Pranav Gandhi, South College, Knoxville, TN, United States; L. Douglas Ried, University of South Florida, Tampa, FL, United States; I-Chan Huang, Carole Kimberlin, Teresa Kauf, University of Florida, Gainesville, FL, United States

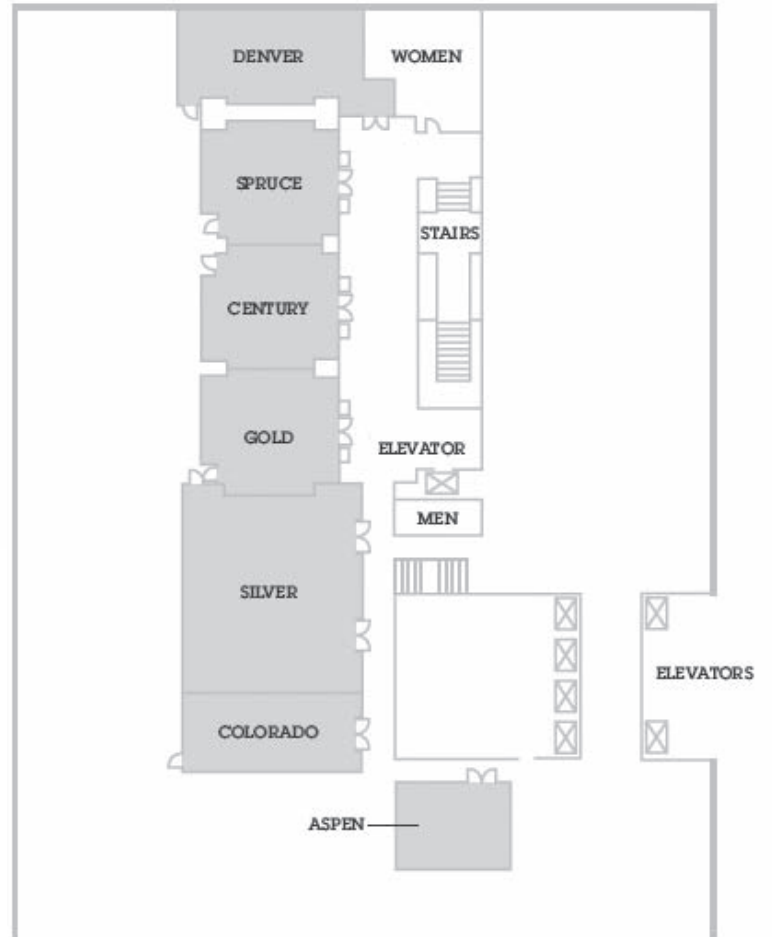
Track Sessions: (CP) Clinical Practice (FR) Frontiers of Quality of Life Research (MT) Methods and Theory (PP) Populations and Policy (Poster Number/Abstract Number) 🏆 = Poster Award

Sheraton Downtown Denver Floor Plan

Tower Building Second Level



Tower Building Mezzanine Level



BUDAPEST

International Society for Quality of Life Research



19th ANNUAL CONFERENCE

October 24-27, 2012

Abstract Submission Deadlines

March 1, 2012

Workshop Submissions

Symposium Abstracts

May 1, 2012

Oral & Poster

Presentation Abstracts

